



Reopening Plan

Frequently Asked Questions

2020-21

** Please note this is a working document, and information will be updated as necessary to reflect best practices and current guidelines. See the full plan at www.dupage88.net/ReturnToSchoolPlan.*

To move to online registration, payment processing includes the 3.49% convenience fee for handling the financial transactions from our provider. This fee provides for payment by credit card, debit card or e-check and guarantees payment.

WHO WILL PAY THE CONVENIENCE FEE?

[CLICK HERE](#) to view the fee chart with a detailed explanation by item.

The fee will be paid by District 88 for two items - Registration Fee and Textbook/Instructional Material Fee. For all other elective items available for purchase

from the RevTrak Webstore, the fee will be paid by the purchaser (such as yearbook, student planner, activity pass, booster group membership, etc.).

WHAT DOES THE NEW REGISTRATION FEE INCLUDE?

The new Registration Fee includes the consolidation of four separate fees that were charged in the past:

- Academic Course Fees
- Digital Learning Fee (Chromebook device)
- Technology Fee
- Participation Fee



**District 88
REGISTRATION
2020-21**



PowerSchool
Powering Brighter Futures

RevTrak
A VANGU COMPANY

What is the breakdown of the registration fees?

WHAT IS THE PARTICIPATION FEE, AND HOW IS IT DIFFERENT FROM THE ACTIVITY PASS?

The Participation Fee is charged to all students to cover the following:

- This fee is for school-wide events that celebrate our student body and student culture such as PBIS initiatives, student recognitions and events where the whole student body participates like assemblies, etc. District 88 doesn't charge a separate fee to participate in extracurricular activities or athletics by individual sport.
- The Activity Pass is intended to cover entry into athletic events, plays and other selected events that require an entrance fee. There is an option to buy this pass for the student or for the family.

WHAT DOES THE TEXTBOOK/INSTRUCTIONAL FEE INCLUDE?

Access to all textbook and/or instructional fees, including novels, e-books, software licensing packaged with textbooks, etc., are included in this flat fee instead of the prior model of selling and then buying back dependent on the quality of the returned item.

CAN I BUY MY TEXTBOOK MATERIALS OUTSIDE OF DISTRICT 88?

We do provide the ISBN numbers for required textbooks for families that want to buy textbooks instead of renting from the district. All students must have the required textbooks listed for their course enrollment.



**District 88
REGISTRATION
2020-21**

DURHAM HIGH SCHOOL
DISTRICT 88
Building Futures
ADDISON TRAIL
WILLOW BRICK



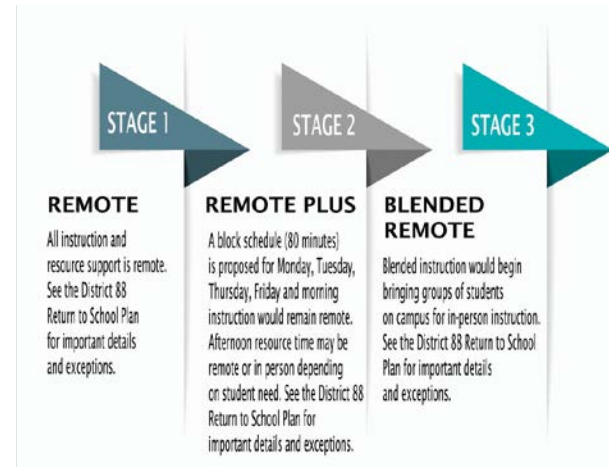
PowerSchool
Powering Brighter Futures

RevTrak
A VANGU COMPANY

What is the breakdown of the registration fees?

STAGES OF THE RETURN TO SCHOOL PLAN

- We will make the decision to move to a Remote Plus or a Blended Remote environment in the best interest of our students, staff and community members. This is a decision of health and safety. We will follow the guidance, recommendations and best practices provided by the Centers for Disease Control, Illinois Gov. JB Pritzker, the Illinois and DuPage County health departments, the Illinois State Board of Education and the DuPage Regional Office of Education.
- If it is deemed safe for students to return to school, families will have the choice to send their students to school or keep them at home.



What is the timeline for transitioning to the next stage of the Return to School Plan?

REMOTE LEARNING SCHEDULE

Time	Monday	Tuesday	Thursday	Friday	Minutes
7:00 - 7:40	Instructional Period 0	Instructional Period 0	Instructional Period 0	Instructional Period 0	40 Minutes
7:45 - 9:05	Instructional period 1	Instructional period 5	Instructional period 1	Instructional period 5	80 Minutes
9:15 - 10:35	Instructional period 2	Instructional period 6	Instructional period 2	Instructional period 6	80 Minutes
10:45 - 12:05	Instructional period 3	Instructional period 7	Instructional period 3	Instructional period 7	80 Minutes
12:15-1:35	Instructional period 4	Instructional period 8	Instructional period 4	Instructional period 8	80 Minutes
1:40-2:25	Lunch	Lunch	Lunch	Lunch	45 Minutes
2:30-3:00	Resource	Resource	Resource	Resource	30 Minutes

REMOTE LEARNING SCHEDULE

Wednesdays (35 minutes) - Wednesday instruction will follow a traditional (0-8 period) shortened schedule and will remain remote unless authorized by the administration. This allows for deep cleaning/sanitation of the facilities and for weekly breakfast and lunch distribution for District 88 students.

7:00-7:35	Period 0	35 Minutes
7:45-8:20	Period 1	35 Minutes
8:25-9:00	Period 2	35 Minutes
9:05-9:40	Period 3	35 Minutes
9:45-10:20p	Period 4	35 Minutes
10:25-11:00	Period 5	35 Minutes
11:05-11:40	Period 6	35 Minutes
11:45-12:20	Period 7	35 Minutes
12:25-1:00	Period 8	35 Minutes
1:05-3:00	PLC Student lunch distribution	115 Minutes

STAGE 1 REMOTE - (Approved to begin the year, with status to be reviewed at the October 5th BOE meeting). The success of remote instruction will be the most critical component of our instructional planning as all of our instructional stages during this pandemic will contain a robust remote instructional program. During this remote period, all instruction and resource support is remote with the following exception: in-person, intermittent instruction/interventions, as determined necessary by the IEP team, may be held for special student populations (LINK 1, DLP, TRANSITION) that are unable to access remote learning independently. These opportunities may be scheduled in advance in consultation with the department head in the identified programs based on student need and teacher input. Additionally, students needing support accessing remote learning (prioritizing SPED, ELL, and 504) may access learning centers on campus while connecting with his/her remote instruction.

Learning Centers - Students with significant barriers to remote learning be approved to access learning centers on campus. Identification, registration, and transportation for approved students will be coordinator by the building administration. Students will be assigned to assigned locations and must follow all students expectations for in-person learning. Students will be given headphones to prevent distraction. Please contact the building principals for more information.

In-person and remote after school tutoring programs may be open on a limited basis for students needing extra support. These would be tutoring positions that could be staffed with teacher assistants with the proper credentials.



**What is the
schedule during
Remote Learning?**

DuPage High School District 88

Remote Learning Expectations for Student Success

BLAZERS & WARRIORS

WILL BE:

RESPECTFUL
TRUSTWORTHY
RESPONSIBLE
ENGAGED
ACCOUNTABLE
COLLABORATIVE
SAFE

COMMUNICATION

Communicate using D88 tools:

- Gmail
- Google Classroom
- Remind

Check them daily!

Message your teachers:

- If you are absent
- If you have internet problems
- If you need help

Self-advocate:

- Ask for help teacher if you are confused in class or with an assignment
- Reach out to a trusted adult if you are overwhelmed with stress/home/life

GOOGLE CLASSROOM & COMMUNITY

Be responsible:

- Read announcements & assignments
- Keep track of your calendar of assignments & assessments

Be trustworthy:

- Submit your own work with integrity & honesty

Be collaborative:

- Be willing to build new digital relationships with peers and teachers
- Be supportive and helpful to peers and teachers

GOOGLE MEET & ZOOM

Be accountable:

- Be on time
- Charge your Chromebook
- Recording of sessions is prohibited!

Be respectful:

- Log in with full name
- Turn camera on
- Turn microphone off when not speaking
- Use chat with permission

Be engaged:

- Close other tabs
- Keep phone away
- Limit distractions
- Use gestures to participate
- Listen & speak during Breakout Rooms

ON CAMPUS IN PERSON

Be safe:

Get permission from staff before coming on campus.

- Take your temperature at home
- Wear a mask
- Keep a 6' distance from others
- Wash/disinfect your hands



What are student expectations during Remote Learning?

MOBILE INTERNET HOTSPOTS

Our data needs will increase as we implement synchronous Remote Learning. During its Aug. 10 meeting, the District 88 Board of Education approved a program with T-Mobile/Sprint to provide mobile internet hotspot services and devices to students. This program will help ensure all students have unlimited data and reduce disruption to the learning process.

To ensure all students have access to the internet, free mobile wifi hotspots will be provided to students who either do not have internet service at home or do not have wifi adequate to attend remote classes and complete their schoolwork.

Should a student need access to a wifi hotspot, please contact your school's technology help desk (see the contact information below).

TECHNOLOGY SUPPORT

Any technology issues with student Chromebooks will be taken care of by the school's technology department. Please call or email our technology department to resolve any technical concerns and access issues.

- Addison Trail Tech Help Desk: 630-628-3343, supportAT@dupage88.net
- Willowbrook Tech Help Desk: 630-530-3414, supportWB@dupage88.net



What support will be provided to students to ensure they have the technology necessary to successfully participate in Remote Learning?

RESOURCE PERIOD EXPECTATIONS

Students have always been expected to attend Resource Period, and that expectation will remain in place during Remote Learning (students will attend remotely in all phases, unless otherwise discussed with the schools). Attendance will be taken during Resource like all other classes, and students are expected to engage and participate. If you have questions or concerns, please contact Addison Trail at 630-628-3300 or Willowbrook at 630-530-3400.

PLEASE NOTE: “Resource Period” is separate from “Remote Study.” Remote Study is a time for students to work on their own, and attendance won’t be taken.

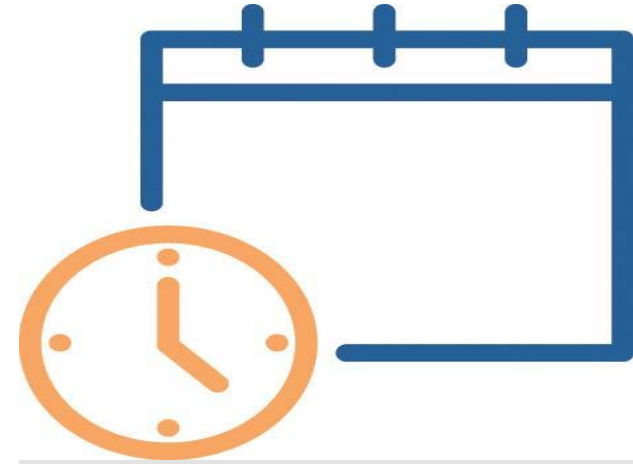


**What are the
expectations for
Resource Period?
How is
“Resource”
different from
“Remote Study?”**

Staff Examples of 80 Minute Instructional Plans

Social Studies

Hook	Direct Instruction and example	Student research and deeper dive	Assessment and Discussion	Reflection
10 Minutes	15 Minutes	30 Minutes	15 Minutes	10 Minutes
Interesting aspect to prep topic-map, graph, image, etc.	Notes Short Video Clip	Individual research into topic with guided questions and inquiry	Formative Assessment Re-Teaching Socratic Discussions	Exit Slip Essential Elements of the Lesson Set the Stage for the Next Day

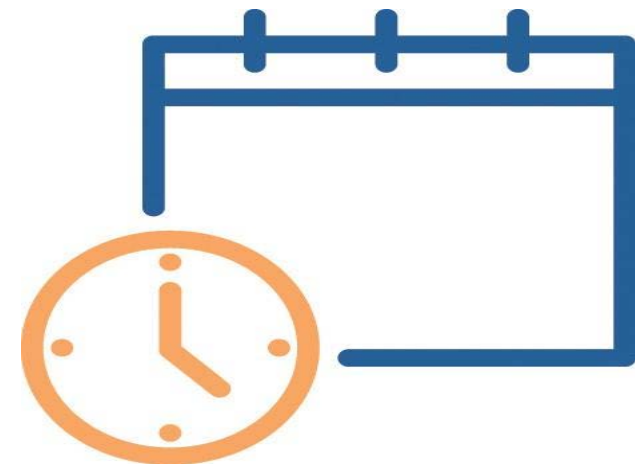


What will be the typical structure of an 80-minute class in the Remote Learning block schedule?

Staff Examples of 80 Minute Instructional Plans

CTE Computer Lab

10 minutes	15 min	45 min	10 min
Attention getter, start of the day WYR question, # of the day/ social/emotional and attendance check in	Introduce new unit; screen share and examples; individual topics, notes	Students work on lesson with new skills and are able to ask questions as we all stay in zoom; computer lab based class; formative check ins; 2 Brain breaks @15 min intervals	Wrap up for day; expectations for next meeting day; Exit slip

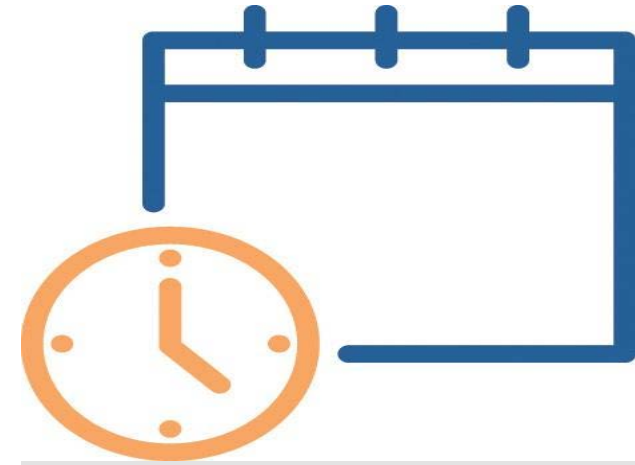


What will be the typical structure of an 80-minute class in the Remote Learning block schedule?

Staff Examples of 80 Minute Instructional Plans

Music Class

Announcements Warm-up	Ensemble Practice	Recording Time	Wrap Up
20 Minutes	20 Minutes	30 Minutes	10 Minutes
Announcements Warm-up:use playalong Skills Building: playalong	Play along with tracks Review previous day's recordings Set goals for today	Send sections to break out rooms Use Soundtrap or Practice first to collect recordings Check in with sections	Return to main meeting Remind students to submit work Answer questions

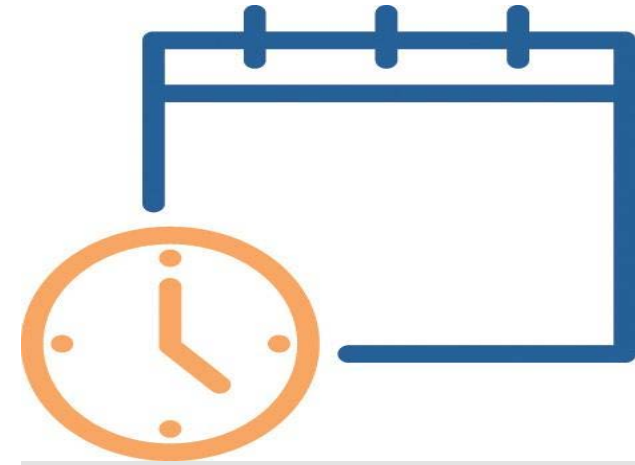


What will be the typical structure of an 80-minute class in the Remote Learning block schedule?

Staff Examples of 80 Minute Instructional Plans

Math

10 minutes	20 min	1-2 minutes	20 min	2 minutes	15 min	1-2 minutes	10 min
Warm-up from day before either in notebook, google form, pear deck, go formative	New lesson... Instruction embedded with practice problems	Brain break	Google Form, pear deck, go formative, kahoot, practice on own	Brain break/water/bathroom break	More instruction and embedded practice	Brain Break	Practice time



What will be the typical structure of an 80-minute class in the Remote Learning block schedule?

ARE TEACHERS REQUIRED TO TEACH FROM THE BUILDING DURING REMOTE LEARNING?

Teachers may choose to be in the building or to teach remotely during Stages 1 and 2 of the Return to School Plan.

IF A STUDENT MISSES A CLASS, WILL THE MATERIALS AND INSTRUCTION BE RECORDED FOR HIM/HER TO ACCESS LATER?

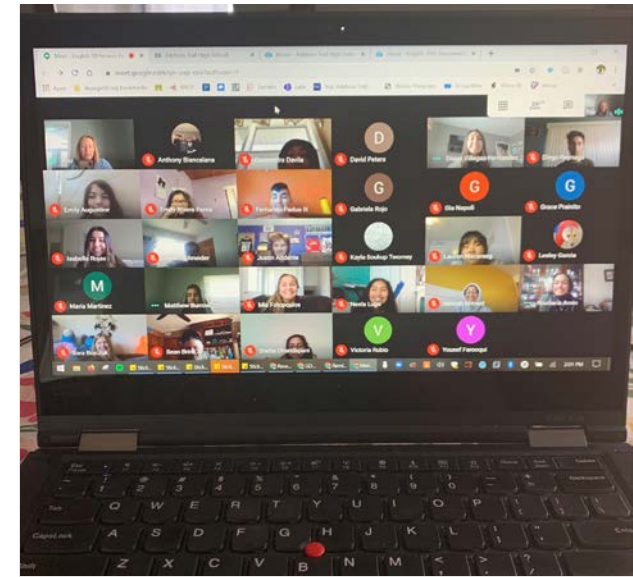
Recording lessons is prohibited, unless otherwise specified by the teacher. If a student is absent, he/she should work with the teachers to make up any missed work.

COULD STUDENTS BE GIVEN A DEFAULT COMPUTER BACKGROUND TO PROTECT PRIVACY?

We are working on how to best protect student privacy, while still allowing students to connect with their teachers and peers on video.

IS THERE A TEST/EXAM PLATFORM?

Teachers are exploring various assessment platforms such as GoFormative, Mastery Manager and a variety of other options. We will continue to communicate on this topic.



How will the remote classroom setting work?

EXAMPLES OF LESSONS

While hands-on labs and career and technical education (CTE) areas are challenging in a Remote Learning environment, we look forward to finding solutions.

We are working with our Department Heads and staff members to develop creative ways to provide engaging learning opportunities. This is a new area for public education, and we are very impressed with the innovative solutions our staff members are proposing. See examples at right.

Making a Prediction using data:

https://drive.google.com/drive/u/1/folders/1UbYqR_QZD5YY_VPNauKLj8yt_pzFnN2n

Testing an evap solenoid in Autos:

<https://emma-6.wistia.com/medias/stqtuxetsx>

Instructional Technology Support:

<https://sites.google.com/dist88.net/instructionalt ech/home?authuser=1>

Illinois State Board of Education (ISBE)
podcast: <http://www.isbe.net/podcast>



**How will Career
and Technical
Education (CTE)
and hands-on
courses work?**

We will continue to share examples during our Board of Education meetings. We invite you to view those meetings. See details at www.dupage88.net.

Technology Center of DuPage: We are continuing our partnership with Technology Center of DuPage (TCD), which offers CTE courses for our students. At this point, TCD will host courses remotely. If you're interested in having your student attend TCD, please contact District 88 Assistant Superintendent for Curriculum & Instruction Yvonne Tsagalis at ytsagalis@dupage88.net or 630-530-3993.

Project Hire-Ed: This initiative was started in 2018 with the intent to build a bridge between workforce needs and education to help employers find the right talent for their organizations and to teach students the skills employers are seeking. Details can be found at <https://www.cod.edu/project-hire-ed>.



**How will Career
and Technical
Education (CTE)
and hands-on
courses work?**

REMOTE MUSIC CLASSES

While providing music classes in a Remote Learning environment is challenging, we look forward to finding solutions.

We are working with our Department Heads and staff members to develop creative ways to provide engaging learning opportunities. This is a new area for public education, and we are very impressed with the innovative solutions our staff members are proposing.

It is difficult to have group rehearsals and performances in a virtual environment. However, our staff is exploring technology to help solve this issue. We will continue to communicate about these efforts. In the meantime, we will provide individual and small-group music opportunities for students.



**How will music
classes work
remotely?**

ATHLETICS

On Aug. 14, we received a letter from Illinois High School Association (IHSA) Executive Director Craig Anderson announcing the organization received approval from the Illinois Department of Public Health (IDPH) to begin practicing for fall sports. We began practices for Girls Tennis, Boys and Girls Golf and Boys and Girls Cross Country on Aug. 17. Girls Swimming will begin later, as we work to secure a pool that will allow our team to swim in an exclusive environment.

For updates on athletics, go to <https://il.8to18.com/aths> or <https://il.8to18.com/willowbrook>. To view the IHSA's intended plans for the 2020-21 school year, go to <https://tinyurl.com/IHSAJuly29>.

CLUBS AND ACTIVITIES

With regard to extracurricular activities, we will follow the guidance, recommendations and best practices provided by the Centers for Disease Control, Illinois Gov. JB Pritzker, the Illinois and DuPage County health departments, the Illinois State Board of Education and the DuPage Regional Office of Education.

We are working with staff members to implement virtual opportunities as much as possible for clubs and extracurricular activities.



**What is the plan
for athletics and
extracurricular
activities?**

STUDENT SUPPORT PERSONNEL

- To provide consistency and continuation of learning and support, school counselors, deans, social workers, school psychologists, special education department heads, IEP coordinators, library media center director, and literacy department heads will be available to students for academic, social and emotional supports through in-person and/or virtual meetings, District 88 email and/or Remind.

- Students attending in person shall receive in-person services, evaluations and supports as required.

WILL THE NEW BEGINNINGS PROGRAM TAKE PLACE FOR FRESHMEN?

Yes, our staff and students have been in training for remote engagement with freshmen.



**How will students
be supported
socially and
emotionally?**

SOCIAL-EMOTIONAL SUPPORTS

The District has formed a team to concentrate on the social emotional well being of students and staff. The purpose of the CARE (Committed to Academics, Resiliency and Equity) team is to implement intentional social emotional support throughout our district using inclusive, culturally responsive, anti-racist, restorative, and trauma informed practice for students and staff.

This committee will receive on-going, intensive training with the goal of implementing staff development and student programming at the Tier 1 and Tier 2 levels. Training will concentrate on the following areas:

- Deep Equity, Inclusion, and Culturally Responsive Practice
- Trauma Informed Practice
- Restorative Practice - including de-escalation training
- Collaborative and Proactive Solutions training for classroom behavior problem solving
- PBIS and CHAMPS training for behavior intervention support
- Team members will be responsible for designing and implementing Tier 1 school-wide student programming, Tier 2 interventions for students, and PD and coaching for staff
- For more information, please [CLICK HERE](#).

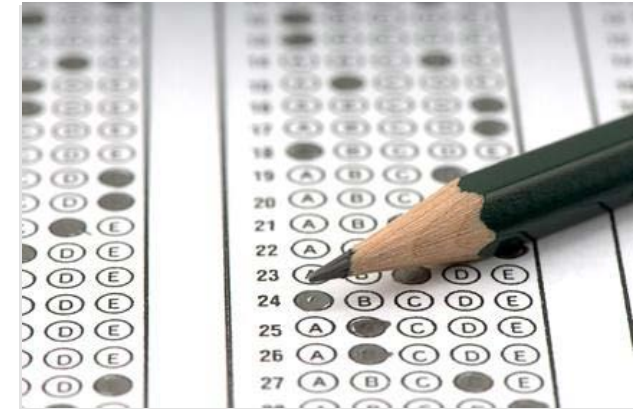


**How will students
be supported
socially and
emotionally?**

SAT AND ACT

We are working with the Illinois State Board of Education and the College Board to provide opportunities for students to take college entrance exams.

As information becomes finalized, we will be sure to share those details.



**How will college
entrance exams
work this year?**

STAY CONNECTED AND UP TO DATE

- We have implemented a Parent Reopening/Transition Committee. Those who are interested can contact Superintendent Dr. Scott Helton at Shelton@dupage88.net.
- We have implemented a Return to School Student Advisory Committee. Those who are interested can contact Director of Community Relations Dani Brink at dbrink@dupage88.net.



**How can parents
and students stay
connected and
informed?**