

**Addison Trail High School  
DuPage HSD 88  
Addison, ILLINOIS**



**ILLINOIS  
SCHOOL  
REPORT  
CARD**

**GRADES : 9 10 11 12**

State and federal laws require public school districts to release report cards to the public each year.

This year, we have updated the report card to provide a full picture of school performance beyond just test scores. A display of this data designed with parents and communities in mind is available on [illinoisreportcard.com](http://illinoisreportcard.com). All of the metrics posted on [illinoisreportcard.com](http://illinoisreportcard.com) are also included in this report.

**STUDENTS**

RACIAL/ETHNIC BACKGROUND AND OTHER INFORMATION												
	White	Black	Hispanic	Asian	Native Hawaiian /Pacific Islander	American Indian	Two or More Races	Percent Low-Income	Percent Limited-English-Proficient	Percent IEP	Percent Homeless	Total Enrollment
<b>School</b>	33.0	3.3	57.7	4.6	0.0	0.1	1.2	59.3	5.7	13.1	1.6	2,026
<b>District</b>	43.6	7.0	40.9	6.3	0.0	0.4	1.8	52.6	4.9	13.4	1.9	4,069
<b>State</b>	49.9	17.5	24.6	4.5	0.1	0.3	3.1	51.5	9.5	13.7	2.4	2,046,857

**Low-income** students come from families receiving public aid; live in institutions for neglected or delinquent children; are supported in foster homes with public funds; or are eligible to receive free or reduced-price lunches. IEP Students are those students eligible to receive special education services.

**Limited-English-proficient** students are those students eligible for transitional bilingual programs. **Total Enrollment** is based on Home School. **Homeless** students are who do not have permanent and adequate homes.

	High Sch. Dropout Rate	Chronic Truancy Rate	Mobility Rate	Attendance Rate
<b>School</b>	1.4	5.9	6.3	92.7
<b>District</b>	1.4	5.7	6.5	92.9
<b>State</b>	2.2	8.7	12.3	94.5

**Mobility rate** is based on the number of times students enroll in or leave a school during the school year. **Chronic truants** are students who are absent from school without valid cause for 9 or more of the last 180 school days.

**INSTRUCTIONAL SETTING**

PARENTAL CONTACT*		Total School Days	
	Percent		Days
<b>School</b>	98.0	<b>School</b>	177
<b>District</b>	99.0	<b>District</b>	177
<b>State</b>	95.7	<b>State</b>	174

\* Parental contact includes parent-teacher conferences, parental visits to school, school visits to home, telephone conversations, and written correspondence.

AVERAGE CLASS SIZE (as of the first school day in May)											
Grades	K	1	2	3	4	5	6	7	8	9 - 12	Overall
<b>School</b>										21.2	21.2
<b>District</b>										21.2	21.2
<b>State</b>										19.4	21.4

TEACHER INFORMATION (Full-Time Equivalents)											
	White	Black	Hispanic	Asian	Native Hawaiian/ Pacific islander	American Indian	Two or More Races	Unknown	Male	Female	Total Number
District	89.5	1.2	7.2	0.8	0.0	0.0	0.0	1.2	46.3	53.7	244
State	81.6	6.5	5.5	1.4	0.1	0.2	0.7	4.1	22.9	77.1	130,066

TEACHER INFORMATION ( Continued )					
	Average Teaching Experience (Years)	% of Teachers with Bachelor's Degrees	% of Teachers with Master's & Above	% of Teachers with Emergency or Provisional Credentials	% of Classes Not Taught by Highly Qualified Teachers
School	--	--	--	0.0	0.0
District		17.6	82.4	0.0	0.0
State		41.2	58.2	0.6	0.6

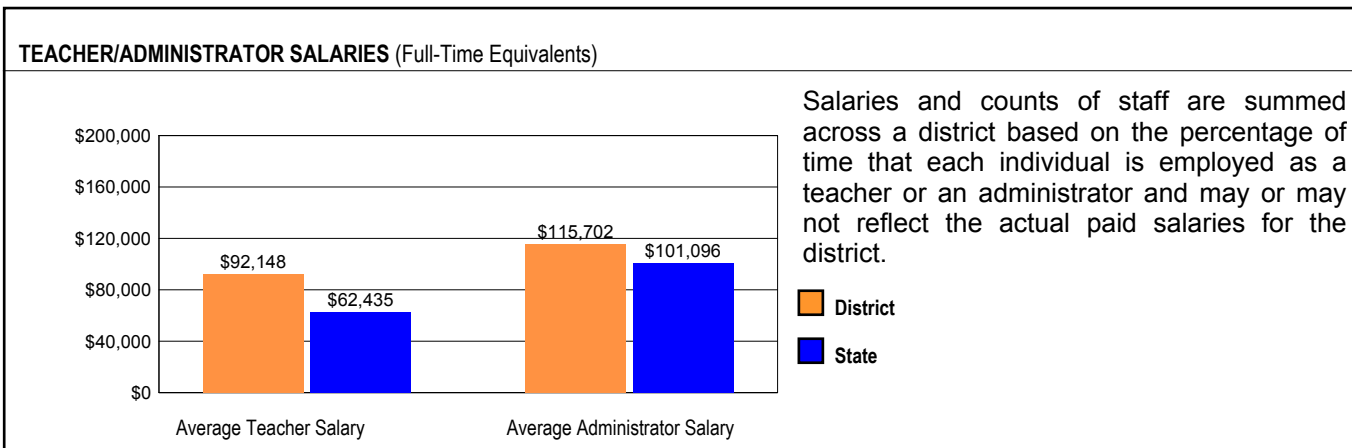
The No Child Left Behind Act requires that information for certain data elements be disaggregated by high- and low-poverty schools. Poverty (low-income) is defined on page 1 of all report cards. High- and low-poverty schools include those in the top and bottom quarters of the poverty distribution of schools in the state.

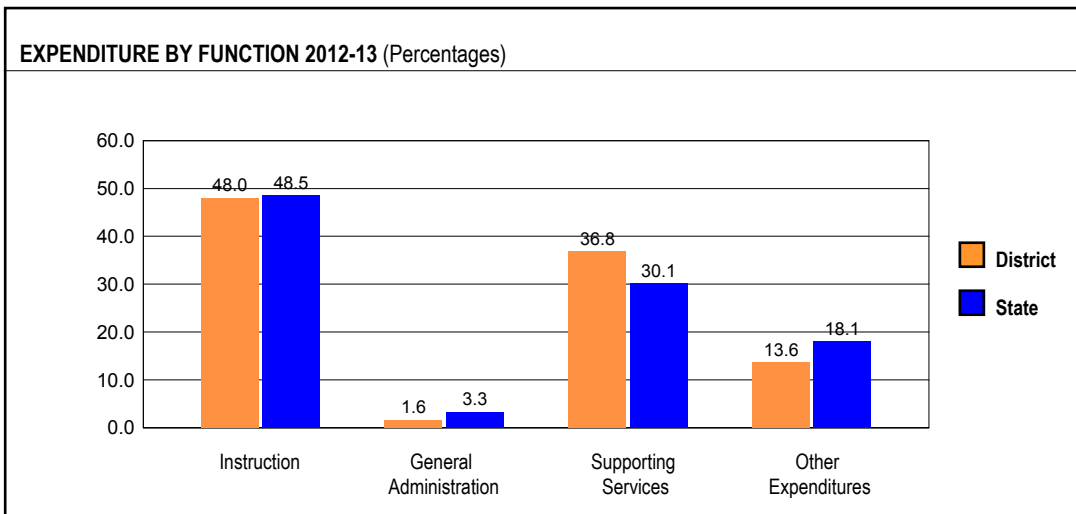
Some teacher/administrator data are not collected at the school level.

TEACHER RETENTION RATE	
School	93.8
District	92.7
State	85.7

PRINCIPAL TURNOVER (Count)	
School	2
District	2
State	2

## SCHOOL DISTRICT FINANCES





REVENUE BY SOURCE 2012-13			
	District	District %	State %
Local Property Taxes	\$55,109,101	82.5	61.3
Other Local Funding	\$2,056,866	3.1	4.7
General State Aid	\$2,977,809	4.5	16.1
Other State Funding	\$4,515,648	6.8	10.0
Federal Funding	\$2,122,132	3.2	7.9
<b>TOTAL</b>	<b>\$66,781,556</b>		

EXPENDITURE BY FUND 2012-13			
	District	District %	State %
Education	\$50,638,109	73.4	73.6
Operations & Maintenance	\$5,560,656	8.1	6.2
Transportation	\$3,530,056	5.1	3.8
Debt Service	\$6,283,281	9.1	7.8
Tort	\$0	0.0	1.2
Municipal Retirement/ Social Security	\$2,139,948	3.1	2.1
Fire Prevention & Safety	\$0	0.0	0.6
Capital Projects	\$841,527	1.2	4.7
<b>TOTAL</b>	<b>\$68,993,577</b>		

OTHER FINANCIAL INDICATORS				
	2011 Equalized Assessed Valuation per Pupil	2011 Total School Tax Rate per \$100	2012-13 Instructional Expenditure per Pupil	2012-13 Operating Expenditure per Pupil
District	\$904,285	1.83	\$10,208	\$18,857
State	**	**	\$7,094	\$12,045

\*\* Due to the way Illinois school districts are configured, state averages for equalized assessed valuation per pupil and total school tax rate per \$100 are not provided.

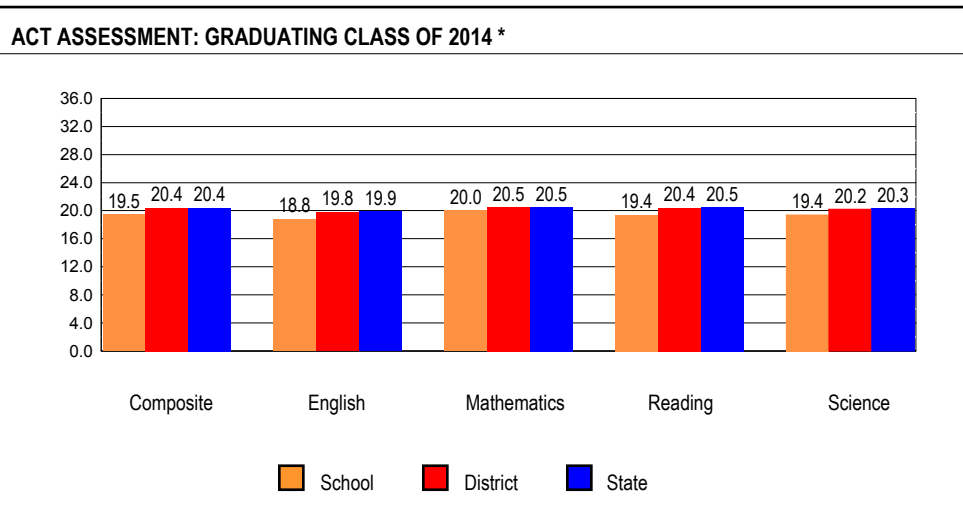
**Equalized assessed valuation** includes all computed property values upon which a district's local tax rate is calculated.

**Total school tax rate** is a district's total tax rate as it appears on local property tax bills.

**Instructional expenditure per pupil** includes the direct costs of teaching pupils or the interaction between teachers and pupils.

**Operating expenditure per pupil** includes the gross operating cost of a school district excluding summer school, adult education, bond principal retired, and capital expenditures.

## ACADEMIC PERFORMANCE



The number and percent of students taking the ACT are no longer reported since virtually every eleventh grade student takes the ACT as part of the PSAE.

\* Includes graduating students' most recent ACT Assessment scores from an ACT national test date or PSAE testing. All students whose scores are college reportable, both standard and extended time tests, are now included. State averages for ACT data are based on regular public schools and do not include private and special purpose schools.

**READY FOR COLLEGE COURSE WORK**

School	38.3
District	43.8
State	45.8

**Percent of Student Met ACT Benchmarks**

	English	Math	Read	Science	ALL 4 Subjects
School	56.1	36.7	32.8	29.7	21.5
District	61.0	39.1	40.3	34.6	25.8
State	60.4	39.2	39.2	32.9	24.2

**COLLEGE ENROLLMENT**

	12 Months	16 Months
School	63.3	70.2
District	67.5	72.2
State	68.7	73.0

**FRESHMAN ON TRACK**

School	97.4
District	97.0
State	87.4

**HIGH SCHOOL 4-YEAR GRADUATION RATE**

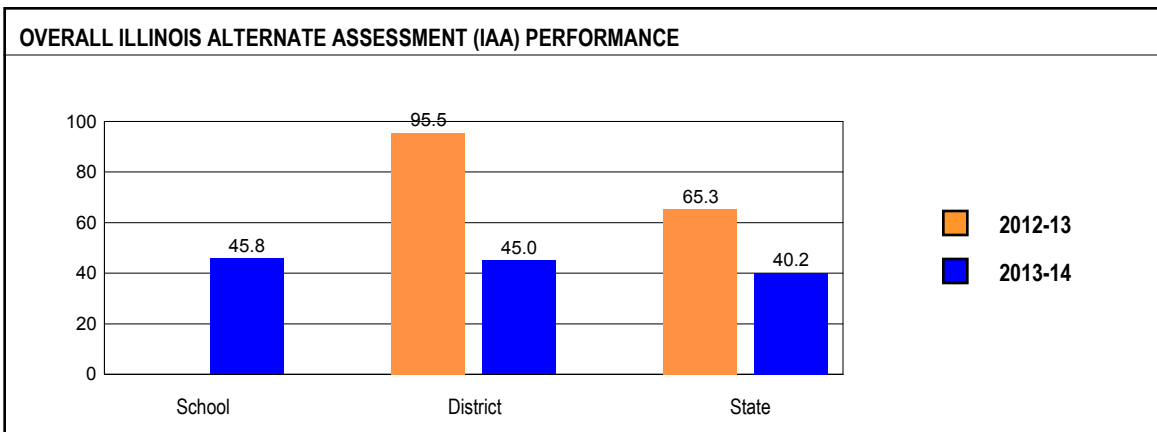
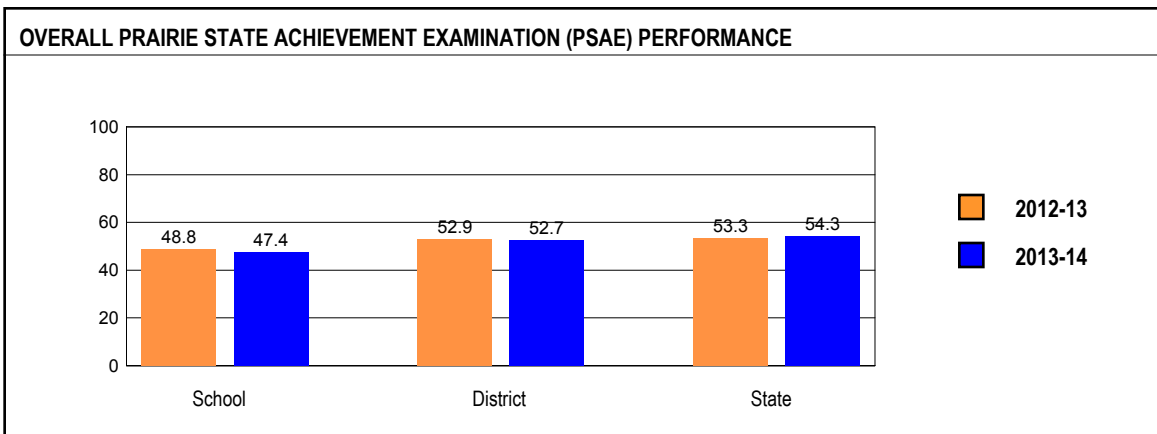
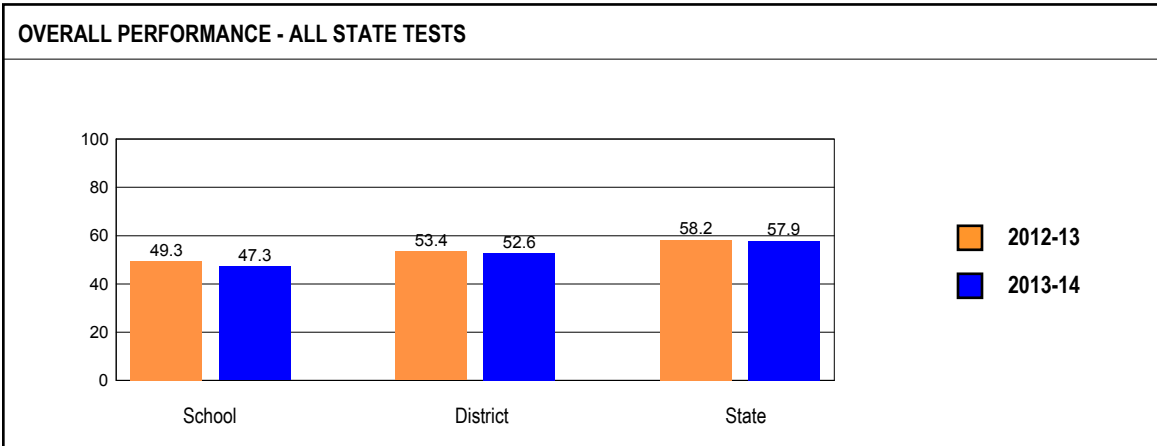
	Gender			Race / Ethnicity							LEP	Migrant	Students with Disabilities	Economically Disadvantaged
	All	Male	Female	White	Black	Hispanic	Asian	Native Hawaiian/Pacific Islander	American Indian	Two or More Races				
School	90.7	88.9	92.6	94.0	75.0	88.2	100.0				67.7		71.9	86.6
District	89.5	87.9	91.2	93.5	82.1	84.8	98.5				64.2		71.1	84.2
State	86.0	83.2	88.9	90.1	77.2	81.3	94.2				71.7		71.8	78.5

**HIGH SCHOOL 5-YEAR GRADUATION RATE**

	Gender			Race / Ethnicity							LEP	Migrant	Students with Disabilities	Economically Disadvantaged
	All	Male	Female	White	Black	Hispanic	Asian	Native Hawaiian/Pacific Islander	American Indian	Two or More Races				
School	88.9	87.6	90.3	92.2	100.0	85.4	100.0				60.9		79.7	84.1
District	91.2	89.9	92.5	94.6	91.4	85.4	100.0				64.7		84.0	86.8
State	87.5	85.3	89.7	90.9	79.5	83.9	95.4				76.2		76.2	80.7

### OVERALL STUDENT PERFORMANCE

These charts present the overall percentages of state test scores categorized as meeting or exceeding the Illinois Learning Standards for your school, district, and the state. They represent your school's performance in reading and mathematics. The ISAT reading and math cut scores were reset for school year 2013. Starting in 2013, Illinois raised the performance cut scores in reading and math to align with college and career ready expectations. In Order to align the Illinois Alternative Assessment (IAA) with the content standards of the Common Core Essentials Elements, Illinois raised the performance cut scores of IAA in reading and math in 2014.

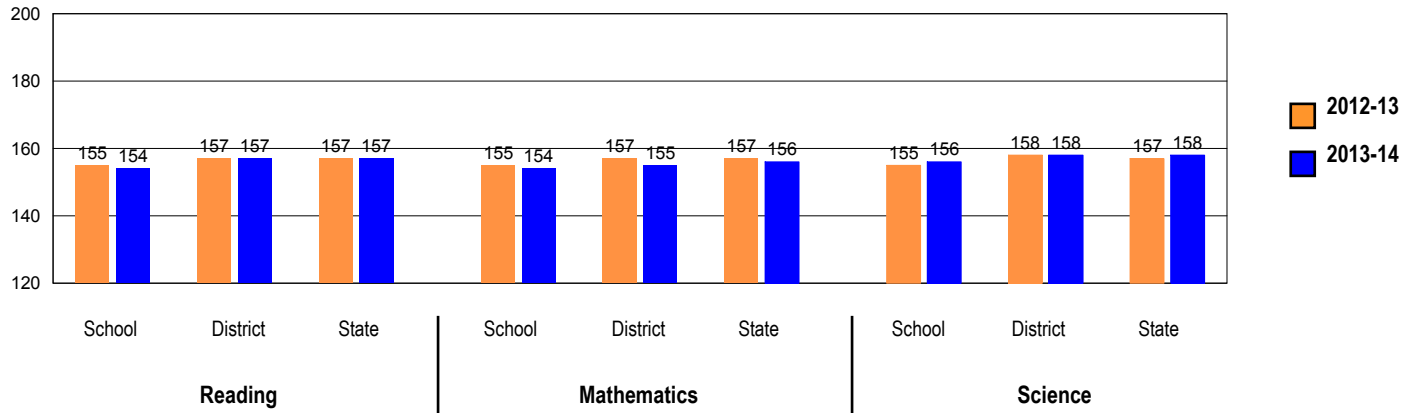


IAA scores in the Progressing and Attaining performance levels count the same, respectfully, as scores on other state assessments that meet or exceed Standards.

**PSAE PERFORMANCE**

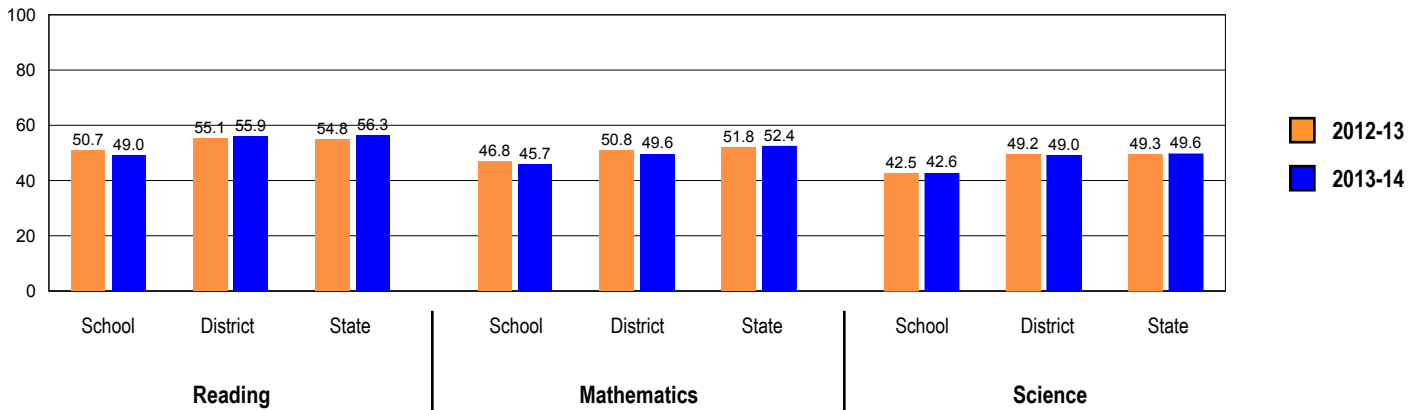
These charts provide information on attainment of the Illinois Learning Standards. They show the average scores and also the percents of student scores meeting or exceeding standards in reading, mathematics, and science on PSAE.

**PRAIRIE STATE ACHIEVEMENT EXAMINATION (PSAE) - Average Scores**



PSAE scores range from 120 to 200.

**PRAIRIE STATE ACHIEVEMENT EXAMINATION (PSAE) - Percents Meeting or Exceeding Standards**



Number of students in this school with PSAE scores in 2014: 455

**IAA PERFORMANCE**

These charts provide information on attainment of the Illinois Learning Standards. They show the percents of student scores meeting or exceeding Standards for the grades and subjects tested on IAA.

**PERFORMANCE ON STATE ASSESSMENTS**

Federal law requires that student achievement results for reading, mathematics, and science for schools providing Title I services be reported to the general public.

The Illinois Standards Achievement Test (ISAT) is administered to students in grades 3 through 8. The Prairie State Achievement Examination (PSAE) is administered to students in grade 11. The Illinois Alternate Assessment (IAA) is administered to students with disabilities whose Individualized Education Programs (IEPs) indicate that participation in the ISAT or PSAE would not be appropriate.

Students with disabilities have an IEP (No Child Left Behind Act). An IEP is a written plan for a child with a disability who is eligible to receive special education services under the Individuals with Disabilities Education Act.

Reading and Mathematics are tested in grades 3 through 8 and 11. Science is tested in grades 4, 7, and 11.

In order to protect students' identities, test data for groups of fewer than ten students are not reported.

PERCENTAGE OF STUDENTS NOT TESTED IN STATE TESTING PROGRAMS FOR READING															
		Gender			Racial/Ethnic Background							LEP	Migrant	Students with Disabilities	Economically Disadvantaged
		All	Male	Female	White	Black	Hispanic	Asian	Native Hawaiian/Pacific islander	American Indian	Two or More Races				
School	*Enrollment	471	235	236	157	20	263	23	0	0	8	13	0	57	274
	Reading	0.4	0.9	0.0	0.0	5.0	0.4	0.0				0.0		1.8	0.7
District	*Enrollment	985	482	503	439	75	373	70	0	4	24	23	0	118	494
	Reading	0.5	0.8	0.2	0.7	1.3	0.3	0.0			0.0	0.0		0.8	0.4
State	*Enrollment	1,060,658	543,109	517,316	532,220	183,481	260,114	48,330	1,029	2,982	31,812	70,904	280	143,042	547,763
	Reading	0.6	0.6	0.5	0.4	0.8	0.6	0.5	1.2	0.8	0.6	1.1	2.5	1.2	0.7

\* Enrollment as reported during the testing windows for grades 3 - 8 and 11.

Number of LEP Students who have attended schools in the U.S. for less than 12 months and are not assessed on the State's reading/language arts test: 0

PERCENTAGE OF STUDENTS NOT TESTED IN STATE TESTING PROGRAMS FOR MATHEMATICS															
		Gender			Racial/Ethnic Background							LEP	Migrant	Students with Disabilities	Economically Disadvantaged
		All	Male	Female	White	Black	Hispanic	Asian	Native Hawaiian/Pacific Islander	American Indian	Two or More Races				
School	*Enrollment	471	235	236	157	20	263	23	0	0	8	13	0	57	274
	Mathematics	0.4	0.9	0.0	0.0	5.0	0.4	0.0				0.0		1.8	0.7
District	*Enrollment	985	482	503	439	75	373	70	0	4	24	23	0	118	494
	Mathematics	0.4	0.8	0.0	0.5	1.3	0.3	0.0			0.0	0.0		0.8	0.4
State	*Enrollment	1,062,316	543,976	518,107	532,697	183,560	260,674	48,844	1,035	2,994	31,822	72,621	281	143,066	548,764
	Mathematics	0.5	0.6	0.5	0.4	0.9	0.5	0.3	0.4	0.6	0.6	0.6	1.4	1.2	0.6

\* Enrollment as reported during the testing windows for grades 3 - 8 and 11.

PERCENTAGE OF STUDENTS NOT TESTED IN STATE TESTING PROGRAMS FOR SCIENCE															
		Gender			Racial/Ethnic Background							LEP	Migrant	Students with Disabilities	Economically Disadvantaged
		All	Male	Female	White	Black	Hispanic	Asian	Native Hawaiian/Pacific Islander	American Indian	Two or More Races				
School	*Enrollment	471	235	236	157	20	263	23	0	0	8	13	0	57	274
	Science	0.4	0.9	0.0	0.0	5.0	0.4	0.0				0.0		1.8	0.7
District	*Enrollment	985	482	503	439	75	373	70	0	4	24	23	0	118	494
	Science	0.5	0.8	0.2	0.7	1.3	0.3	0.0			0.0	0.0		0.8	0.4
State	*Enrollment	454,072	231,511	222,497	231,754	77,973	108,437	20,846	425	1,245	13,169	23,463	112	60,394	226,620
	Science	0.7	0.8	0.6	0.5	1.3	0.7	0.3	0.2	1.1	0.8	0.9	0.9	1.4	0.9

\* Enrollment as reported during the testing windows for grades 4, 7, and 11.

### **PRAIRIE STATE ACHIEVEMENT EXAMINATION (PSAE)**

The following tables show the percentages of student scores in each of four performance levels. These levels were established with the help of Illinois educators who teach the grade levels and learning areas tested. Due to rounding, the sum of the percentages in the four performance levels may not always equal 100.

- Level 1 -- Academic Warning - Student work demonstrates limited knowledge and skills in the subject. Because of major gaps in learning, students apply knowledge and skills ineffectively.
- Level 2 -- Below Standards - Student work demonstrates basic knowledge and skills in the subject. However, because of gaps in learning, students apply knowledge and skills in limited ways.
- Level 3 -- Meets Standards - Student work demonstrates proficient knowledge and skills in the subject. Students effectively apply knowledge and skills to solve problems.
- Level 4 -- Exceeds Standards - Student work demonstrates advanced knowledge and skills in the subject. Students creatively apply knowledge and skills to solve problems and evaluate the results.



**Grade 11****Grade 11 - All**

Levels	Reading				Mathematics				Science			
	1	2	3	4	1	2	3	4	1	2	3	4
School	8.8	42.2	44.2	4.8	9.0	45.3	39.6	6.2	7.5	49.9	35.6	7.0
District	7.4	36.7	48.1	7.8	9.9	40.6	43.3	6.3	7.2	43.8	38.6	10.4
State	7.7	36.0	45.6	10.7	10.1	37.6	43.2	9.1	9.4	41.0	38.1	11.5

**Grade 11 - Gender**

Levels	Reading				Mathematics				Science				
	1	2	3	4	1	2	3	4	1	2	3	4	
Male	School	12.8	42.0	38.9	6.2	8.0	39.4	44.2	8.4	7.5	45.6	35.8	11.1
	District	10.9	39.3	41.2	8.6	11.6	36.5	44.0	7.9	7.5	41.8	35.8	14.8
	State	10.0	37.4	42.5	10.1	10.4	35.9	42.7	10.9	9.5	37.8	38.3	14.4
Female	School	4.8	42.4	49.3	3.5	10.0	51.1	34.9	3.9	7.4	54.1	35.4	3.1
	District	4.1	34.2	54.7	7.0	8.2	44.5	42.6	4.7	7.0	45.7	41.2	6.1
	State	5.4	34.6	48.6	11.4	9.8	39.2	43.7	7.3	9.3	44.1	37.9	8.7

**Grade 11 - Racial/Ethnic Background**

Levels	Reading				Mathematics				Science				
	1	2	3	4	1	2	3	4	1	2	3	4	
White	School	4.5	35.1	52.6	7.8	1.3	40.9	46.1	11.7	2.6	39.6	44.2	13.6
	District	4.2	27.3	55.9	12.6	4.9	32.6	52.7	9.8	3.0	34.3	46.9	15.9
	State	4.5	26.4	53.7	15.3	5.4	29.3	52.6	12.7	4.6	31.0	47.7	16.7
Black	School	11.1	44.4	44.4	0.0	5.6	61.1	33.3	0.0	5.6	77.8	16.7	0.0
	District	11.6	53.6	34.8	0.0	23.2	52.2	24.6	0.0	17.4	59.4	20.3	2.9
	State	15.3	54.6	28.3	1.8	23.1	54.2	22.1	0.7	22.8	58.9	17.1	1.2
Hispanic	School	11.5	49.0	37.5	2.0	13.8	48.2	35.6	2.4	10.7	57.7	30.0	1.6
	District	10.5	47.4	39.9	2.2	13.3	51.0	33.5	2.2	10.2	56.8	30.5	2.5
	State	10.6	49.2	36.6	3.5	13.3	49.7	34.4	2.6	12.6	55.9	28.3	3.2
Asian	School	4.5	22.7	50.0	22.7	9.1	22.7	50.0	18.2	4.5	22.7	40.9	31.8
	District	7.2	27.5	47.8	17.4	8.7	26.1	50.7	14.5	4.3	29.0	39.1	27.5
	State	5.0	22.3	51.2	21.5	3.9	18.1	50.8	27.1	4.1	25.4	45.4	25.1
Native Hawaiian/Pacific Islander	School												
	District												
	State	7.4	33.6	50.3	8.7	10.1	35.6	45.0	9.4	5.4	43.6	39.6	11.4
American Indian	School												
	District												
	State	8.8	42.5	44.3	4.4	10.0	48.7	38.6	2.7	10.0	48.7	36.4	4.9
Two or More Races	School												
	District	9.1	27.3	63.6	0.0	13.6	36.4	50.0	0.0	18.2	22.7	54.5	4.5
	State	6.3	32.8	48.0	12.9	8.8	37.4	43.6	10.2	8.0	39.0	39.7	13.3

**Grade 11 - Limited-English-Proficient**

Levels	Reading				Mathematics				Science			
	1	2	3	4	1	2	3	4	1	2	3	4
School	69.2	30.8	0.0	0.0	53.8	38.5	7.7	0.0	38.5	61.5	0.0	0.0
District	56.5	43.5	0.0	0.0	43.5	52.2	4.3	0.0	39.1	60.9	0.0	0.0
State	49.8	45.1	5.1	0.0	47.3	42.7	9.3	0.7	45.3	49.4	5.1	0.2

**Grade 11 - Students with Disabilities**

Levels	Reading				Mathematics				Science				
	1	2	3	4	1	2	3	4	1	2	3	4	
IEP	School	45.5	45.5	9.1	0.0	52.3	43.2	4.5	0.0	43.2	52.3	4.5	0.0
	District	32.3	55.2	11.5	1.0	49.0	42.7	8.3	0.0	36.5	53.1	8.3	2.1
	State	32.7	48.5	16.5	2.4	44.9	41.9	12.1	1.1	37.7	46.5	13.0	2.8
Non-IEP	School	4.9	41.8	47.9	5.4	4.4	45.5	43.3	6.8	3.6	49.6	38.9	7.8
	District	4.7	34.6	52.2	8.5	5.5	40.3	47.2	7.0	4.0	42.8	42.0	11.3
	State	4.7	34.5	49.1	11.8	5.8	37.0	47.1	10.1	5.9	40.3	41.2	12.6

**Grade 11 - Economically Disadvantaged**

Levels	Reading				Mathematics				Science				
	1	2	3	4	1	2	3	4	1	2	3	4	
Free/Reduced Price Lunch	School	11.9	47.5	37.9	2.7	13.0	49.4	34.9	2.7	9.2	59.8	28.4	2.7
	District	10.7	45.8	39.7	3.8	14.5	48.9	34.0	2.5	9.7	54.8	31.3	4.2
	State	12.9	49.8	34.2	3.1	17.1	50.8	30.1	1.9	16.4	55.8	25.1	2.7
Not Eligible	School	4.6	35.1	52.6	7.7	3.6	39.7	45.9	10.8	5.2	36.6	45.4	12.9
	District	4.2	27.6	56.5	11.7	5.2	32.2	52.5	10.0	4.8	32.8	45.8	16.5
	State	3.8	25.5	54.2	16.5	4.8	27.5	53.2	14.6	4.1	29.7	48.0	18.2

**ILLINOIS ALTERNATE ASSESSMENT (IAA)**

The Illinois Alternate Assessment (IAA) is administered to students with disabilities whose Individualized Education Programs (IEPs) indicate that participation in the ISAT or PSAT would not be appropriate. The table below presents the percentages of student scores in each of four performance levels.

- Level 1 -- Entry - Students do not demonstrate knowledge and skills in the subject through links to the Illinois Learning Standards.
- Level 2 -- Foundational - Students demonstrate emerging knowledge and skills in the subject as linked to the Illinois Learning Standards. Students exhibit an ability to reproduce knowledge and skills.
- Level 3 -- Satisfactory - Students demonstrate basic knowledge and skills in the subject through links to the Illinois Learning Standards. Students exhibit an ability to associate their knowledge and skills.
- Level 4 -- Mastery - Students demonstrate knowledge and skills in the subject through links to the Illinois Learning Standards. Students exhibit the ability to apply their knowledge and skills.

**Grade 11****Grade 11 - All**

Levels	Reading				Mathematics				Science			
	1	2	3	4	1	2	3	4	1	2	3	4
School	33.3	8.3	33.3	25.0	41.7	25.0	33.3	0.0	8.3	0.0	25.0	66.7
District	30.0	10.0	45.0	15.0	30.0	40.0	25.0	5.0	10.0	5.0	30.0	55.0
State	26.9	31.5	27.7	13.9	27.1	31.0	28.4	13.6	14.0	13.4	27.0	45.6

**Grade 11 - Gender**

Levels	Reading				Mathematics				Science			
	1	2	3	4	1	2	3	4	1	2	3	4
Male												
School												
District												
State	27.1	32.3	26.7	14.0	27.2	31.1	27.1	14.6	13.8	14.6	26.4	45.2
Female												
School												
District	27.3	0.0	45.5	27.3	18.2	45.5	27.3	9.1	18.2	9.1	27.3	45.5
State	26.7	30.2	29.2	13.9	26.8	30.8	30.5	11.9	14.3	11.3	28.1	46.3

**Grade 11 - Racial/Ethnic Background**

Levels	Reading				Mathematics				Science			
	1	2	3	4	1	2	3	4	1	2	3	4
White												
School												
District												
State	26.9	30.4	27.6	15.1	27.0	30.4	28.2	14.4	13.6	14.3	26.4	45.8
Black												
School												
District												
State	26.3	30.0	30.2	13.5	26.8	31.6	29.0	12.6	13.5	13.1	28.4	45.0
Hispanic												
School												
District												
State	26.2	38.2	23.7	12.0	25.2	34.1	29.3	11.4	13.1	11.9	26.7	48.4
Asian												
School												
District												
State	39.0	32.2	16.9	11.9	44.1	16.9	20.3	18.6	28.4	17.9	23.9	29.9
Native Hawaiian/Pacific Islander												
School												
District												
State												
American Indian												
School												
District												
State												
Two or More Races												
School												
District												
State	23.7	26.3	34.2	15.8	23.7	34.2	23.7	18.4	10.5	5.3	34.2	50.0

**Grade 11 - Economically Disadvantaged**

Levels	Reading				Mathematics				Science			
	1	2	3	4	1	2	3	4	1	2	3	4
Free/Reduced Price Lunch												
School	20.0	10.0	40.0	30.0	30.0	30.0	40.0	0.0	0.0	0.0	30.0	70.0
District	23.1	15.4	38.5	23.1	30.8	30.8	30.8	7.7	7.7	0.0	23.1	69.2
State	24.5	31.8	29.6	14.1	23.6	31.1	31.1	14.2	12.6	11.0	27.5	48.9
Not Eligible												
School												
District												
State	30.6	30.9	24.9	13.6	32.3	30.7	24.4	12.6	15.9	16.9	26.3	40.9