

**ADDISON TRAIL DRIVER EDUCATION
DRIVING GUIDE**

**PARENT-TEACHER-STUDENT
COOPERATIVE INVOLVEMENT PROGRAM**

STUDENT _____



Addison Trail High School

213 North Lombard Road

Addison Illinois 60101-1999

Main Office: 630 628-3300

Fax: 630 628-0177

Web: www.dupage88.net

Dear Parent:

Driving an automobile is a very complex and difficult task. It is the feeling of the Addison Trail Driver Education Department that it would be very beneficial for the parents and instructors to work hand-in-hand to properly teach your sons and daughters to drive. To work together effectively, we must communicate to you what we feel is the need of the individual student. This is the main purpose of this **In Car Driving Guide.**

You will be receiving progress reports after each lesson. These reports will also include suggestions on how you can help the students strengthen their driving skills. The driving guide will also give the students a chance to mentally prepare for their next lesson.

We encourage you to call if you have any questions.

Sincerely,

Driving Training Instructor

Phone: 628-3327 or 628-3329

Achieving The Highest Standards

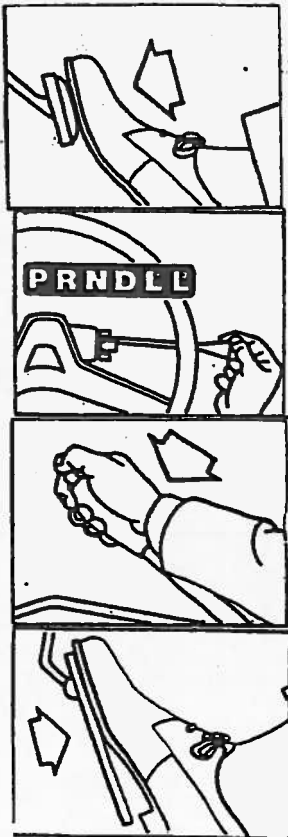


ORIENTATION

Identify and understand the following:

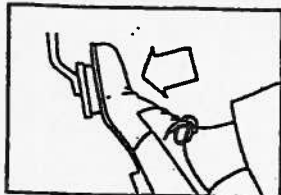
- A. Temperature gauge
- B. Oil pressure gauge
- C. Battery gauge
- D. Parking brake
- E. Brake release lever
- F. Hood release
- G. Foot brake
- H. Accelerator
- I. Air conditioner, heater, defroster
- J. Rear window defogger
- K. Fuel gauge
- L. Speedometer and odometer
- M. Windshield wipers
- N. Window wash
- O. Turn signals
- P. Transmission positions
- Q. Emergency flashers
- R. Lights
- S. Horn
- T. Steering wheel adjustment

LESSON 1: PRE-DRIVING PROCEDURES



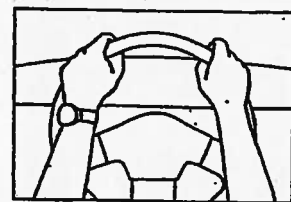
- A. Adjust seat
Right foot should reach pedal comfortably with your leg bent slightly. You should be able to keep the heel of your right foot on the floor and operate both the gas and brake pedal.
- B. Adjust mirrors
Rear view and side mirrors are adjusted, allowing you to see cars approaching from the rear.
- C. Fasten seat belts
The belts should fit snugly, low across your hips.
- D. Starting the engine
Turn ignition switch to "ON". Continue turning key forward to start engine. Release key as soon as engine starts. (Make sure selector lever is in PARK when starting the engine.) After car starts, check to see that all red warning lights are off.
- E. Moving the car.
1. Step on brake.
 2. Shift to drive.
 3. Release parking brake, continuing to hold foot brake pedal down.
 4. Release foot brake.
 5. Accelerate gently.

LESSON 1: PRE-DRIVING PROCEDURES (continued)



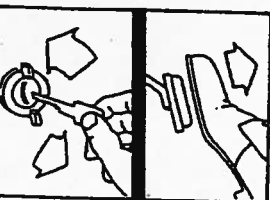
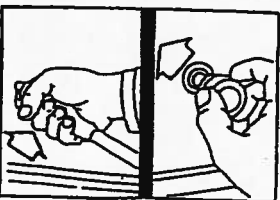
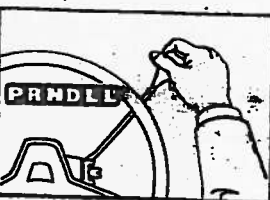
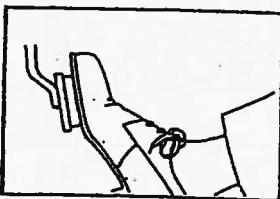
F. Stopping the car

1. Check traffic in both mirrors before slowing down.
2. Let up on the accelerator.
3. Push down gradually and firmly on the foot brake pedal. Ease up slightly on the brake pedal just before stopping. This action helps you make a smoother stop.



G. Turning the car, hand-over-hand steering

1. From a balanced hand position (10-2) (9-3), place your right hand near the top of the wheel.
2. Pull down to the left, releasing your left hand from the wheel. (Pull down only a quarter turn.)
3. Cross your left hand over your right hand and grasp the top of the wheel.
4. Pull down with your left hand about a quarter turn as you release your right hand. Continue this action until you have completed the turn.

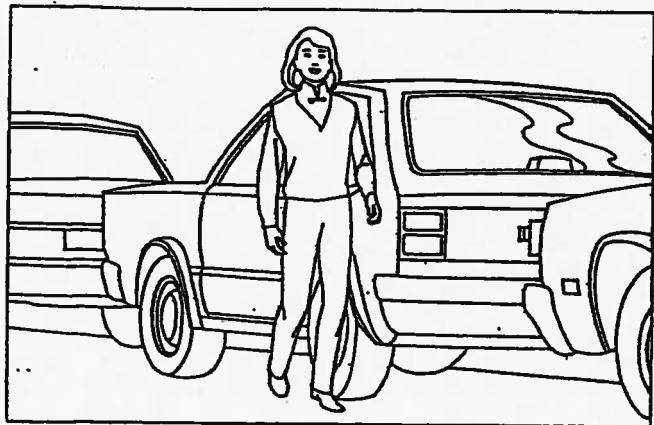


H. Securing the car

1. Once you have stopped, continue to keep pressure on the foot brake.
2. Shift to PARK.
3. Set the parking brake and turn off all accessories.
4. Turn off ignition switch and remove the key. Release foot brake.
5. Unfasten your seat belt. Exit the car.



PRE-DRIVING PROCEDURES (continued)



- I. Leaving the car
- Leave the car from the curb side whenever possible. This avoids the risk of opening the door into moving traffic. If you get out on the street side, follow these steps:
1. Check inside and outside mirrors.
 2. Glance over your left shoulder for approaching traffic.
 3. When safe, open door and get out quickly.
 4. Walk around the rear of the car to the curb. You will then be facing approaching traffic and reduce your risk of being hit.

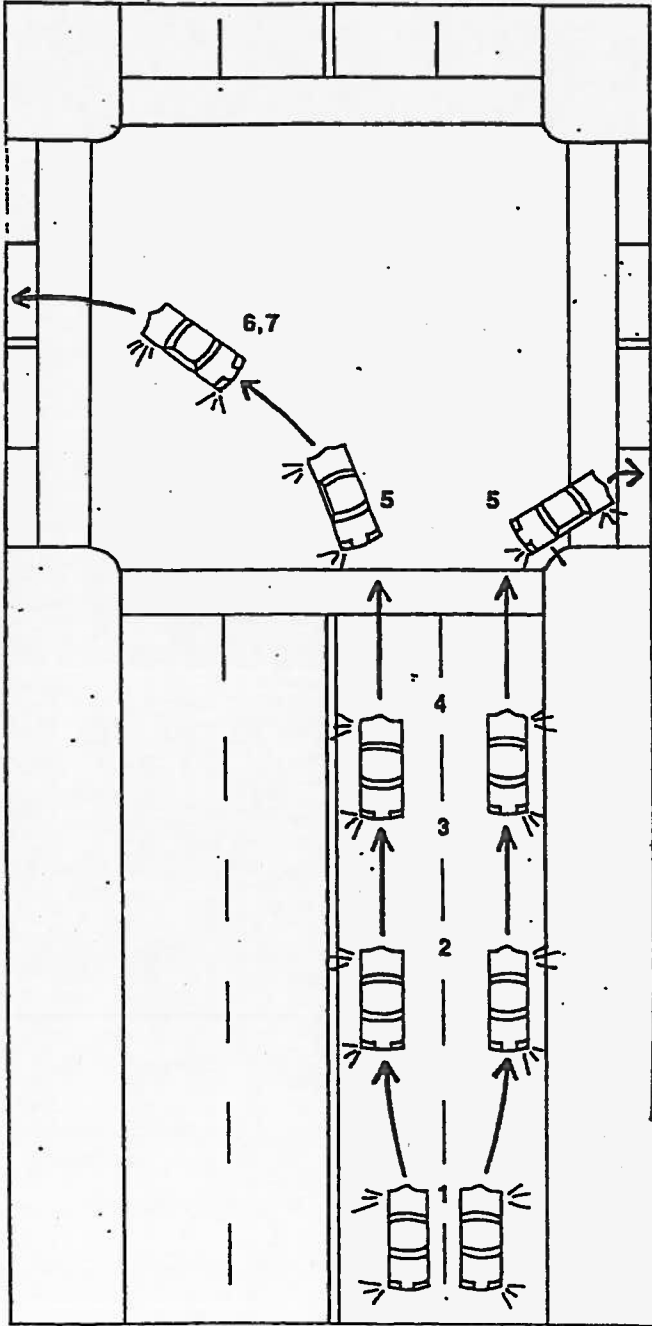
REVIEW LESSON 1 AND ADD BASIC CAR MANEUVERS

- A. Stops
Wheels must stop rolling for at least two counts.

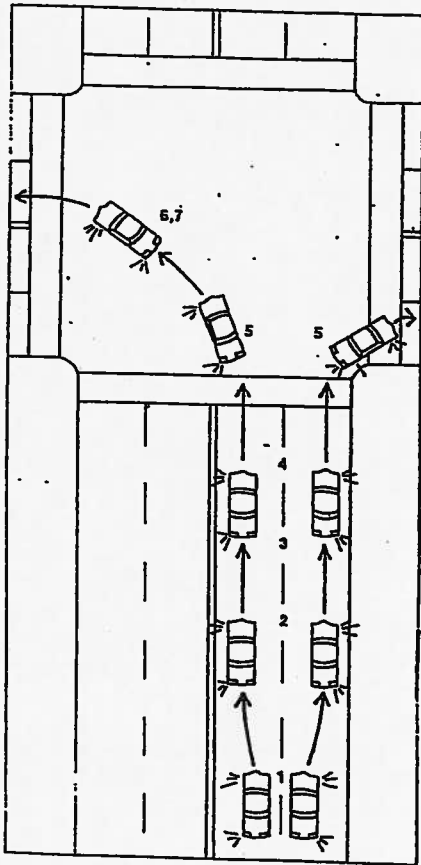
- B. Placement
1. Even with white stop line
 2. Even with stop sign (may then have to move up to curb for better vision).
 3. If stop sign is beyond cross walk, you must stop before the cross walk, then proceed when clear.

- C. Right-of-Way
1. First car that is clearly into the intersection.
 2. Pedestrians in marked or unmarked cross walks.
 3. Vehicle to the right, if it enters the intersection at the same time.
 4. Vehicles or pedestrians already in the intersection, when the signal changes.
 5. Oncoming vehicles, when you are making a left turn.
 6. Traffic in both directions when crossing a through street.

- D. Right turns
1. Be in the far right lane about four feet from the curb.
 2. Signal about half a block before the turn.
 3. Apply gentle brake pressure to reduce speed. Slow to about 10 mph just before the cross walk.
 4. Turn the steering wheel when your car's front wheels are even with the bend of the corner.



REVIEW LESSON 1 AND ADD BASIC CAR MANEUVERS (continued)

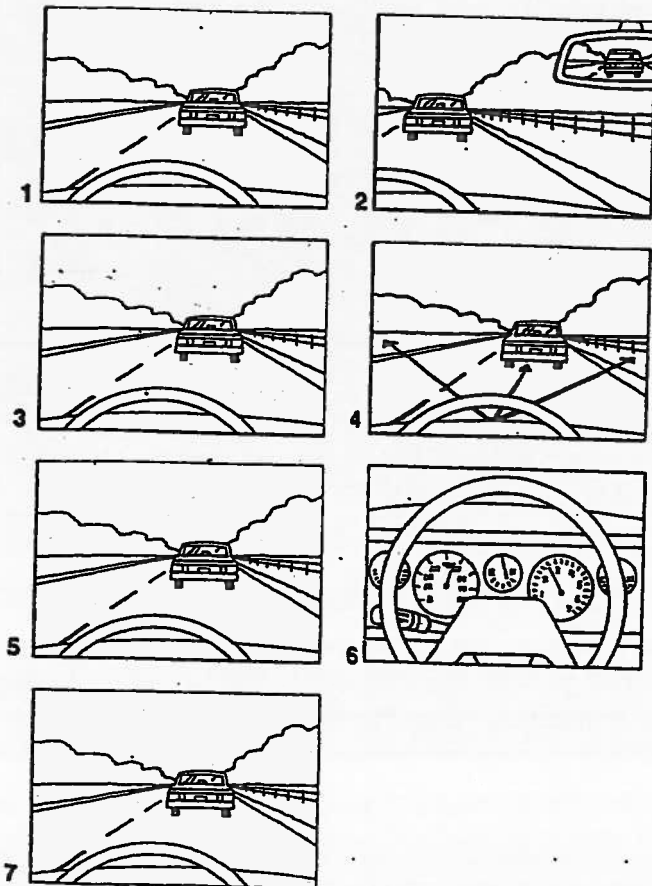


- D. Right turns (continued)
5. Turn into the nearest lane of traffic going in your direction.
 6. Accelerate gently, about halfway through the turn.
 7. Return the steering wheel to straight-ahead position.

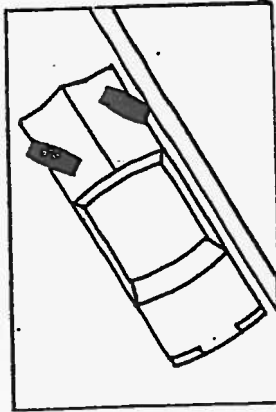
- E. Left turns
1. Be in the lane nearest to the center line.
 2. Signal about half a block before turn.
 3. Apply gentle brake pressure to reduce speed. Slow to about 10 mph just before crosswalk.
 4. Turn the steering wheel just before you reach the center of the intersection.
 5. Turn into the nearest lane of traffic going in your direction.
 6. Accelerate gently about halfway through the turn.
 7. Return the steering wheel to the straight-ahead position.

- F. Use of visual search pattern
As you are driving, begin developing an orderly visual search pattern by practicing the following steps:

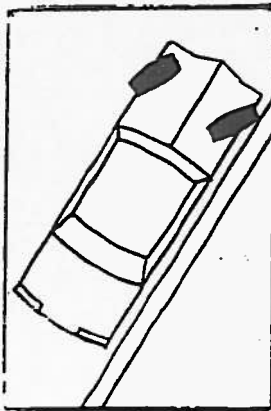
1. Look ahead.
2. Check rear view mirror.
3. Look ahead.
4. Scan the sides for intersections, driveways, and possible hazards.
5. Look ahead.
6. Check speedometer and gauges.
7. Look ahead.



HILL PARKING BACKING (STRAIGHT AND AROUND CORNER) 3 POINT TURNS

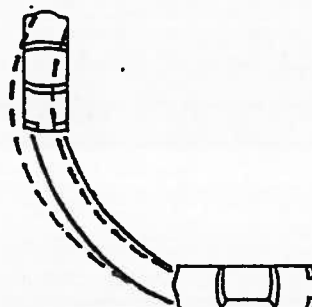
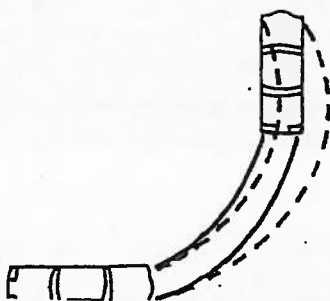
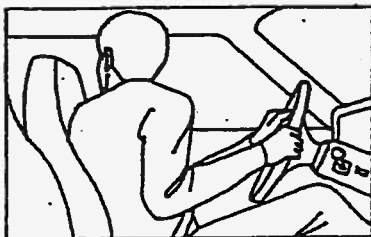
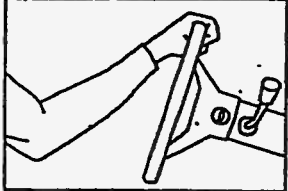
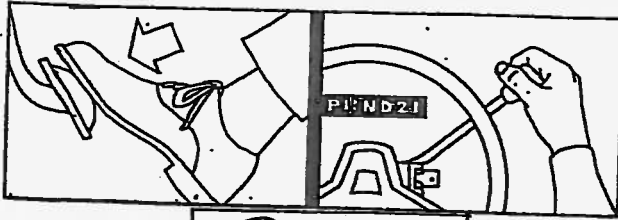


- A. Uphill parking with a curb
1. Position your car parallel to the street and stop close to the curb.
 2. Position steering wheel sharply to the left.
 3. Shift to neutral and let your car creep slowly back until the back of the right front tire rests gently against the curb.
 4. Put car into park and set emergency brake.
 5. When leaving the curb, signal intentions, check rear view mirror, side mirror, blind spot and accelerate gently into traffic.
 6. As car begins leaving the curb, correct wheels so that you do not leave too wide.



- B. Downhill parking with a curb
1. Position your car parallel to the street and stop close to the curb.
 2. Position steering wheel towards the right curb, keeping your foot on the brake.
 3. Shift to neutral and let the car creep slowly to the curb until the right front tire rests gently against the curb.
 4. Put car into park and set emergency brake.
 5. When leaving the curb, signal intentions, put car into reverse and back about a foot away from the curb.
 6. Check rear view mirror, side mirror, blind spot and accelerate gently into traffic.
 7. Straighten wheel as you pull into the street.

HILL PARKING BACKING (STRAIGHT AND AROUND CORNER) 3 POINT TURNS (continued)



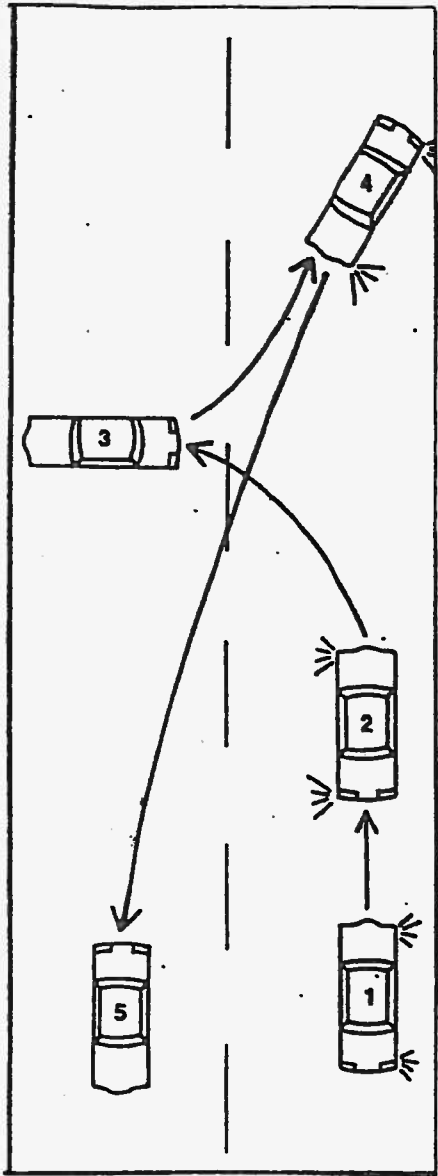
C. Backing straight

1. Hold brake pedal down and shift car into reverse.
2. Turn body to the right; put your right arm over the back of the seat. Look back through rear window, making sure path is clear.
3. Put your left hand at the top of the steering wheel at the 12:00 position.
4. Release pressure on the brake pedal, just enough to allow the car to creep backwards slowly. In most cases, the idling speed will allow the car to move back without accelerating.
5. Move the top of the steering wheel in the direction you want the car to go. Make only small steering corrections.
6. Keep your foot over the brake pedal while the car moves back. Glance quickly to the front and sides to check traffic.
7. Stay turned until car comes to a complete stop.

D. Back around corner (left and right)

1. Before backing, check for traffic, pedestrians, parked cars, and low stationary objects behind you.
2. Turn body to the right. Use one hand at the 12:00 position and begin slowly moving the car.
3. When backing right, turn wheel to the right, allowing a wide space on the left side.
4. When backing left, turn wheel to the left, allowing a wide space on the right side.
5. Begin to look through the rear side and side windows in the direction you are backing.
6. Unwind the steering wheel to finish the turn in a straight position.

HILL PARKING
BACKING (STRAIGHT AND AROUND CORNER)
3 POINT TURNS (continued)



- E. Three point turn
1. Signal to the curb and pull over parallel to the curb.
 2. Check traffic, rear view mirror, outside mirror, and blind spot. Signal left and move slowly to the left curb. Stop with wheels straight.
 3. Check traffic again, shift to reverse and turn wheels sharply to the right while backing slowly. Stop before hitting the curb.
 4. Check traffic, shift to drive, turn wheels to the left, and move slowly forward into the right lane to drive in the opposite direction.

LANE CHANGES

A. Following distance

1. Keep a distance of at least 2-4 seconds behind the car in front of you.
2. Select a fixed object on the road ahead such as a sign, tree, or overpass. When the vehicle ahead of you passes the object, begin counting one-thousand one, one-thousand two.
3. If you reach the object before you finish saying one-thousand two, you are following too closely.

B. Lane changing right

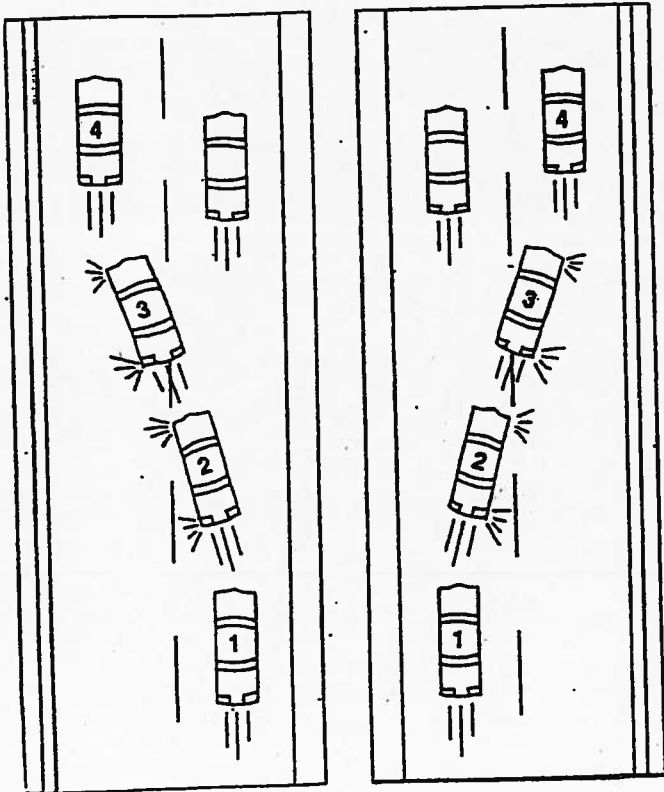
1. Signal intentions. Check traffic ahead.
2. Check inside rear view mirror.
3. Check side mirror.
4. Check blind spot over right shoulder. Be careful not to pull steering wheel to the right as you make the blind spot check. Keep steering straight.
5. Look back forward, if lane is clear, complete the lane change.

➤ If lane is not clear, stay in your lane until vehicle has dropped back far enough or has pulled ahead enough.

C. Lane changing left

1. Signal intentions. Check traffic ahead.
2. Check inside rear view mirror.
3. Check side mirror.
4. Check blind spot over left shoulder. Be careful not to pull steering wheel to the left as you make the blind spot check. Keep steering straight.
5. Look back forward. If lane is clear, complete lane change.

➤ Make sure you can complete the lane change at the posted speed limit. There may be times when traffic conditions may cause you to adjust your speed to complete this task.



TWO LANE HIGHWAY DRIVING/ANGLE PARKING

TWO LANE HIGHWAY DRIVING

- A. Orderly visual search pattern
 1. Look ahead. Look high and far down the roadway, approximately 12 seconds ahead.
 2. Check rear view mirror.
 3. Look ahead.
 4. Scan the sides for intersections, driveways, and possible hazards.
 5. Look ahead.
 6. Check speedometer and gauges.
 7. Look ahead.

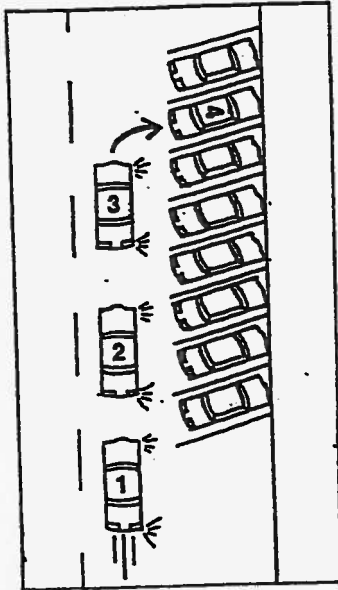
- B. Following distance
Keep a distance of at least 2-4 seconds behind the car in front of you.

- C. Right-of-Way
Follow all right-of-way rules. Check Lesson 2 to review.

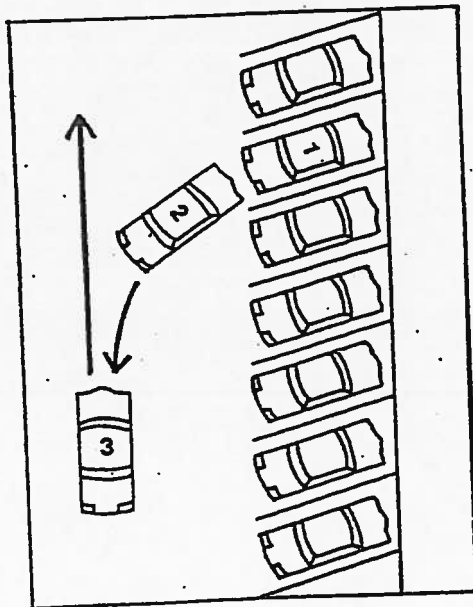
- D. Oncoming cars
Oncoming cars are only a few feet away when you meet on undivided highways. You need to be alert to drivers who might be anxious to pass cars and fail to check for oncoming traffic. Make sure you always have a swerve pattern to avoid conflicts.

- E. Monitor distance of drivers behind
 1. Check rear view mirror frequently for tailgaters.
 2. Leaving room in front of your car allows the driver behind you to pass.
 3. Leaving room in front of your car allows you to brake slowly and avoid being rear-ended by the driver behind.

ANGLE PARKING



- A. Entering an angle parking space
1. Position your car about five feet from the row of parked cars. Signal a right turn and check traffic to the rear. Begin to brake.
 2. Continue braking and check your right blind spot.
 3. When you can see down the right line of the parking stall, turn the wheels sharply to the right. Enter the stall slowly.
 4. Straighten the wheels when you are centered in the space. Stop before wheels strike the curb.



- B. Leaving an angle parking space
- Your view often will be blocked as you begin to back into moving traffic. Back cautiously as you look to the rear and sides for other roadway users.
1. Creep straight back while you control speed.
 2. When your car's front bumper is even with the left car's rear bumper, begin to turn right.
 3. Back into the nearest lane, with wheels straight, shift to a forward gear and proceed.

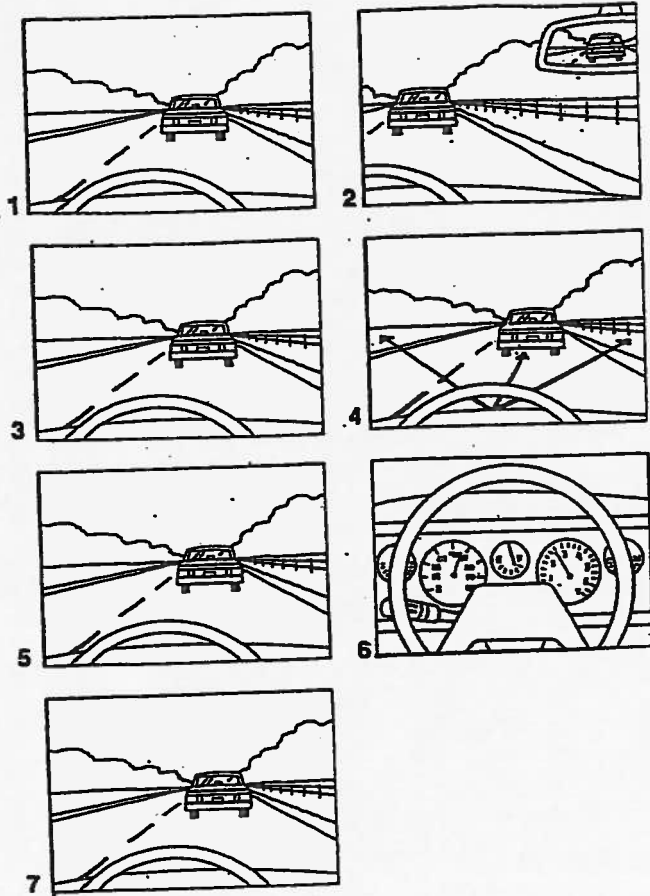
MID-TERM EXAM

The mid-term exam is a culmination of the first five lessons of behind-the-wheel. The instructor will tell the student where to go and what skill to perform. It will be up to the student to remember how to do the actual skill.

The instructor is only to grade during the mid-term and not help the student. This mid-term grade is designed to give the student and parent a snapshot as to how their child is doing at this point in the course.

The mid-term grade does not count towards the passing or failing of the course. A student can technically fail the mid-term, and then improve over the next 4 ½ weeks and pass the course.

FOUR LANE HIGHWAY



- A. Orderly visual search pattern
1. Look ahead. Look high and far down the roadway, approximately 12 seconds ahead.
 2. Check rear view mirror.
 3. Look ahead.
 4. Scan the sides for intersections, driveways, and possible hazards.
 5. Look ahead.
 6. Check speedometer and gauges.
 7. Look ahead.
- B. Undivided four lane roads
1. Oncoming drivers are close to you. It is usually safer to drive in the right lane.
 2. The faster you go, the farther ahead you must be able to see.
 3. You need to be able to take all previously used skills and use them accordingly throughout this lesson.

ONE-WAY STREETS/PERPENDICULAR PARKING

ONE WAY STREETS

- A. Identifying one-way streets
 - 1. In most areas, one-way signs will be mounted.
 - 2. Moving traffic and parked cars are all pointed the same way.
 - 3. If a one-way street is properly marked, all center lane lines will be broken white lines.
 - 4. All signs on both sides of the street will face towards you. If you head down the left side of a street where signs face away from you, you are either on a two-way or a one-way street, going in the wrong direction.
- A. Entering one-way streets
 - 1. Entering a one-way street to the right requires a simple right turn from the right lane on a one-way street.
 - 2. Entering a one-way street to the left requires a sharp left turn into the first lane on the left.
- B. Special conditions

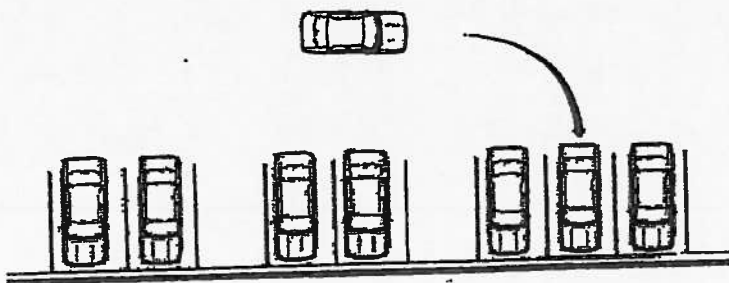
When driving in areas of one-way streets, your visual search pattern really gets tested. You must stay alert and read all roadway markings and posted signs at all intersections. At times, you might even be allowed to make a left turn on a red light.
- D. Railroad crossings
 - 1. When approaching railroad crossings, remember that the train has the right-of-way.
 - 2. Make sure NO train is coming before you start to cross the tracks. Promptly check your field of vision. The shorter the sight distance, the lower your speed must be. At night, change lights to high beam to see if a train is at the crossing.
 - 3. Turn radio off or down. Open side window and listen for a whistle or other train sounds.
 - 4. Reduce speed so that you can stop safely before reaching the crossing.
 - 5. If several cars are crossing at the same time, don't cross until the car ahead is far enough on the other side to leave room for your car beyond the tracks.
 - 6. Never cross behind a train that has just passed until you are sure the crossing is clear both ways.

ONE-WAY STREETS/PERPENDICULAR PARKING (cont.)

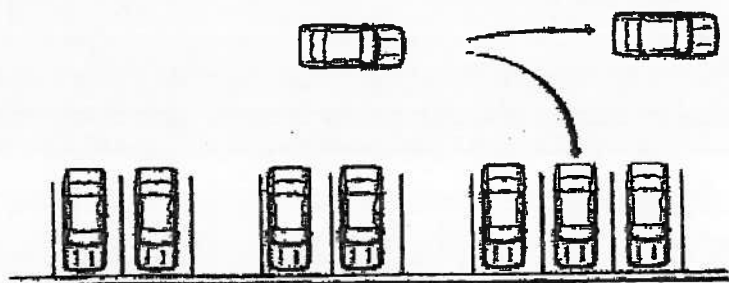
PERPENDICULAR PARKING

- A. Visually target parking space.
- B. Check traffic in rear area.
- C. Use your signal to indicate that you wish to park.
- D. Steer sharply, while proceeding slowly.
- E. Straighten wheel when center.
- F. To pull out of parking space, check traffic in all rear areas.
- G. Shift to reverse, back slowly.
- H. Recheck traffic and back slowly into lane, checking rear area continually.
- I. Shift to drive and move forward.

Perpendicular Parking—Entering

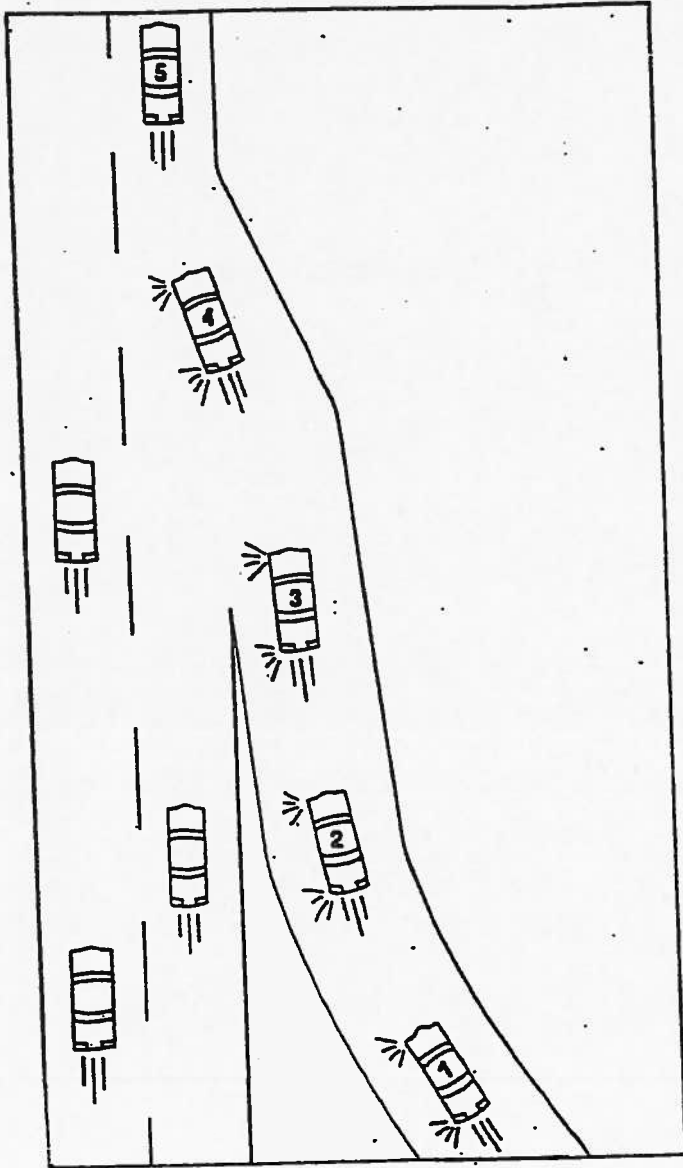


Perpendicular Parking—Leaving



EXPRESSWAY DRIVING/PARALLEL PARKING

EXPRESSWAY DRIVING



A. Entering the expressway

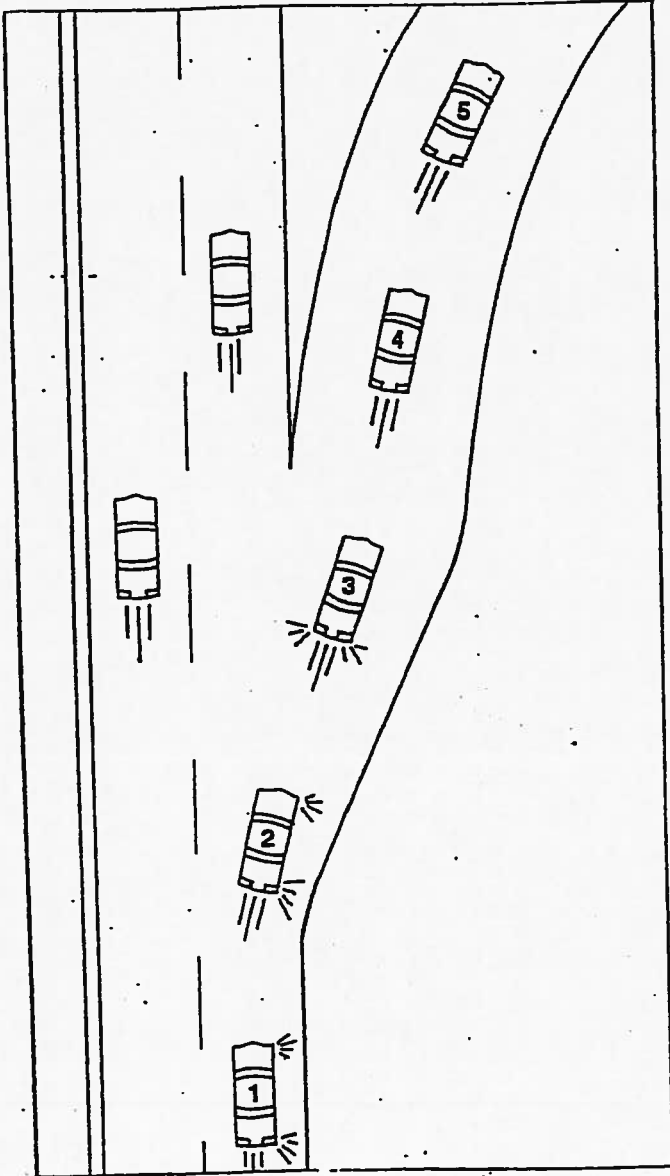
1. Be sure the entrance is the one you want and that the ramp is an entrance ramp. Look for a **WRONG WAY** or **DO NOT ENTER** sign.
2. Once on the entrance ramp, be alert for vehicles ahead and behind. Look for a gap in traffic that your car will fit into safely. This can be done by taking quick glances through your left outside rear view mirror and over your left shoulder. Signal your intention to merge, well in advance.
3. Once on the acceleration lane, adjust your speed to the flow of traffic. Continue to look for a gap in traffic and decide the time and place to enter.
4. Before entering the merge area, decide which vehicle to follow in the traffic flow. As you enter the merge area, adjust your speed to match the traffic flow. Position your car at a safe interval behind the car you plan to follow. Merge smoothly.
5. Once in traffic, cancel your turn signal and adjust to the speed of the traffic. (If the traffic is in excess of the posted speed limit, you should move to the right lane and travel at the posted speed limit.) Keep a safe space cushion around your car.

EXPRESSWAY DRIVING/PARALLEL PARKING (continued)

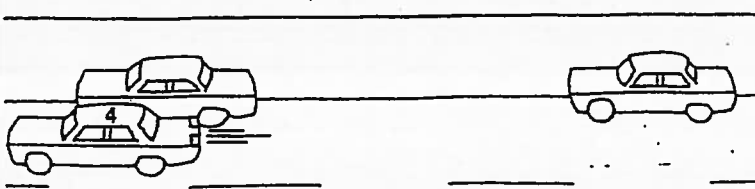
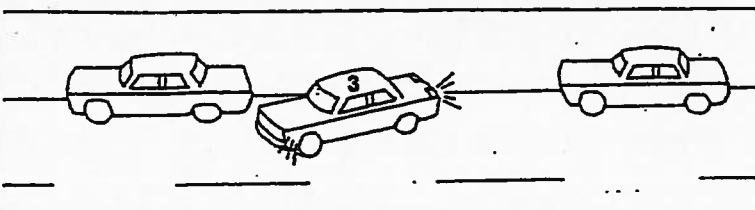
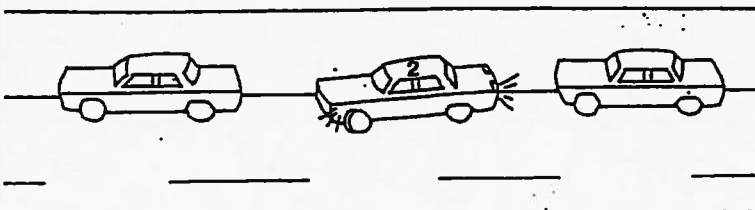
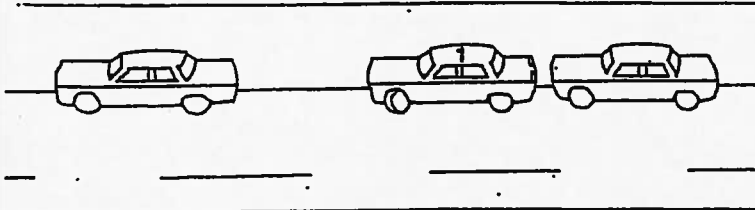
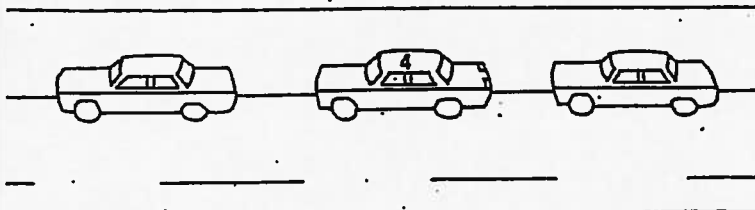
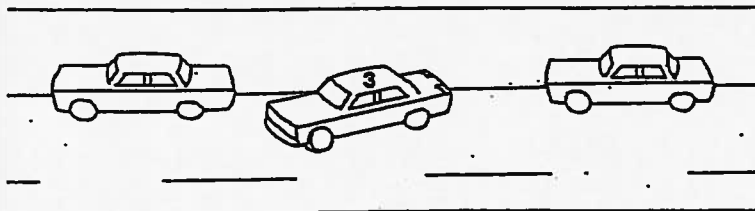
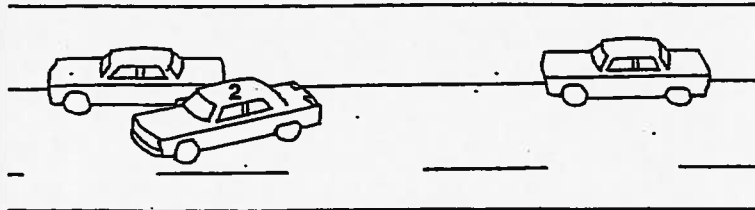
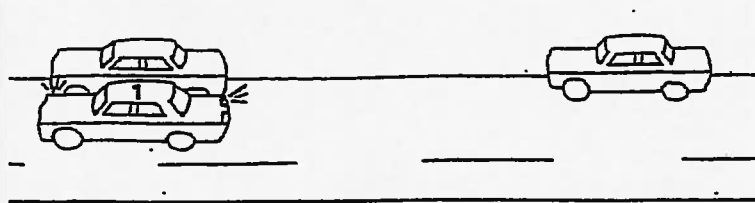
B. Exiting an expressway

1. About one-half mile before the exit, signal and move into the lane that leads to the deceleration lane. Avoid last second decisions and sudden moves.
2. Move into the deceleration lane. DO NOT slow down until your car is out of the expressway traffic flow.
3. Cancel your signal. Flash brake lights to warn drivers behind that you are slowing down.
4. Check rear view mirrors so that you know the speed of following traffic. Slow down gradually to keep a space cushion ahead and behind you.
5. Identify the exit ramp speed. Check your own speed and adjust to the exit ramp speed limit.

- Be alert when entering traffic on a local highway or street after leaving the expressway. Anticipate lower speed limits, two-way traffic ahead, intersections, and pedestrians.
- Lane changes are the most common expressway maneuvers. Avoid changing lanes unless there is a need to better position yourself in traffic. Change lanes one at a time and signal every lane change. Avoid slowing down during the lane change; speed up a little when moving to the new lane to stay out of the way of any driver behind you.



PARALLEL PARKING



C.

Parallel parking (entering)

1. Select a space that is about six feet longer than your car.
2. Signal to the car; stop two to three feet away from the car, with the rear bumpers even. Shift to reverse. Check traffic. Look back over your right shoulder and begin to back slowly while you turn right. Aim towards the rear corner of the space.
3. When the back of your seat is even with the rear bumper of the car, begin to straighten your wheels. Keep speed slow.
4. When your front bumper is even with the car's back bumper, turn the wheels sharply to the left.
5. When the car is parallel to the curb, straighten the wheels. Slowly center your car in the space.

D.

Parallel parking (exiting)

1. Yield to all approaching traffic!
2. Back straight until your rear bumper almost touches the car behind you. Turn the wheels sharply to the left before you stop.
3. Signal left turn, check mirror, mirror, blind spot and move forward slowly.
4. Check right front fender for clearance.
5. Turn wheels slowly to the right when halfway out of parking space. Center car in lane and accelerate gently into traffic.

DESTINATION LESSON/FOLLOW TEACHER'S DIRECTIONS

This lesson is designed to have the students not only practice their driving skills up to this point, but also follow verbal directions.

The teacher will give the student directions to a predetermined destination. Student will have to observe road signs and listen to directions in order to get to the destination.

Choices

#1

York Community High School
355 W Saint Charles Rd
Elmhurst, IL 60126-3199

- | | |
|---|--------|
| | 0.2 mi |
| 1. Turn left onto W Army Trail Blvd | |
| | 1.5 mi |
| 2. Continue onto John F Kennedy Dr | |
| | 0.2 mi |
| 3. Turn right onto US-20 E/W Lake St | |
| | 1.4 mi |
| 4. Exit onto IL-83 S/N Rte 83 S | |
| | 2.5 mi |
| 5. Turn left onto W St Charles Rd | |
| Destination will be on the left | 0.5 mi |

#2

Stratford Square Mall
112 Stratford Square Mall
Bloomington

- | | |
|--|--------|
| 1. Head south on N Lombard Rd toward Army Trail Blvd | 0.2 mi |
| 2. Take the 1st right onto Army Trail Blvd | 3.0 mi |
| 3. Turn right onto Bloomington Rd | 1.2 mi |
| 4. Turn left onto W Schick Rd | 1.5 mi |
| 5. Turn right onto Springfield Dr | 0.5 mi |
| 6. Take a right onto lake street. | 410 ft |
| 7. Take a right onto Route 53 | 0.3 mi |
| 8. Take a left onto Army Trail Road | |
| 9. Take a left back into school | |

#3**YORKTOWN MALL**

1. Head **south** on **N Lombard Rd** toward **Army Trail Blvd** 0.2 mi
2. Take the 1st right onto **Army Trail Blvd** 0.5 mi
3. Turn left onto **IL-53 S/N Rohlwing Rd**
Continue to follow IL-53 S 3.0 mi
4. Turn left onto **W St Charles Rd** 0.9 mi
5. Turn right onto **S Main St** 1.9 mi
6. Turn left onto **E Roosevelt Rd** 0.3 mi
7. Take the 2nd right onto **Highland Ave** 1.3 mi
8. Turn left onto **Yorktown Mall Dr** 308 ft
9. Continue straight onto **Yorktown Shopping Center**

REVIEW FOR FINAL EXAM

This is a time for students to work on all the skills necessary to drive a car safely. Skills to be reviewed include: hill parking, backing around a corner, 3-point turns, railroad crossings, one-way streets, 2 lane and 4 lane highways, lane changes and parking.

FINAL EXAM

The final exam is the final drive of the course.

The instructor will direct the student as to where to go and what skills to perform. It will be up to the student to perform on his/her own. This grade will determine whether or not the student passes the course.

If the instructor needs to grab the wheel or use the brake to avoid an accident, the student will automatically fail the course.

It is important that the student practices all of the skills from the nine-week course before taking the final exam. **Remember, the instructor cannot help during the final exam.**

Teacher has the option to fail student if they feel the student poses a safety threat to himself/herself or others. See the point sheet in this packet.

DAILY COMMENT SHEET

NAME: _____

Orientation/Pre-Driving Procedures

Date: _____

Parent Signature

Review Lesson 1/Basic Car Maneuvers

Date: _____

Parent Signature

Hill Parking/Backing/3 Point Turns

Date: _____

Parent Signature

Lane Changes

Date: _____

Parent Signature

Parent Signature

Two Lane Highway Driving/Angle Parking

Date: _____

Parent Signature

Parent Signature

Mid-Term Exam

Date: _____

Parent Signature

Four Lane Highway

Date: _____

Parent Signature

Parent Signature

One-Way Streets/Perpendicular Parking

Date: _____

Parent Signature

Parent Signature

Expressway Driving/Parallel Parking

Date: _____

Parent Signature

Parent Signature

Destination Driving/Following Directions

Date: _____

Parent Signature

Review for Final Exam

Date: _____

Parent Signature

Parent Signature

Final Exam

Date: _____

Teacher has the option to fail student if they feel the student poses a safety threat to himself/herself or others.

Parent Signature

NAME _____ DATE _____

PASS**FAIL**

(See notes on back)

MID-TERM EXAM

		<u>POINTS</u>					<u>TOTAL</u>	<u>COMMENTS</u>
1.	<u>STARTING THE VEHICLE</u>							
	A. Fastening seat belts, adjust mirror and seat	10	10	10	10	10	_____	_____
	B. Selects improper gear	10	10	10	10	10	_____	_____
2.	<u>BACKING</u>							
	A. Uses mirrors, strikes curb, out of lane	10	10	10	10	10	_____	_____
3.	<u>STEERING</u>							
	A. Places hands in incorrect position on wheel	5	5	5	5	5	_____	_____
	B. Uses one hand habitually	5	5	5	5	5	_____	_____
4.	<u>RAILROAD CROSSING</u>							
	A. Fails to look in all directions	5	5	5	5	5	_____	_____
	B. Fails to cover brake	5	5	5	5	5	_____	_____
5.	<u>SPEED CONTROL</u>							
	A. Too fast for conditions	10	10	10	10	10	_____	_____
	B. In excess of marked speed limits	10	10	10	10	10	_____	_____
	C. Too slow, doesn't keep up with traffic	5	5	5	5	5	_____	_____
6.	<u>STOPPING</u>							
	A. Not at a safe place	5	5	5	5	5	_____	_____
	B. Stops too abruptly	5	5	5	5	5	_____	_____
7.	<u>STOP STREETS</u>							
	A. Fails to come to a full stop	10	10	10	10	10	_____	_____
	B. Fails to yield right of way	10	10	10	10	10	_____	_____
	C. Fails to check cross traffic	10	10	10	10	10	_____	_____
8.	<u>LANE CHANGES</u>							
	A. Slows down to change lanes	5	5	5	5	5	_____	_____
	B. Fails to check blind spots	5	5	5	5	5	_____	_____
	C. Doesn't check mirror	5	5	5	5	5	_____	_____
	D. Doesn't use turn signals when moving from lane to lane	5	5	5	5	5	_____	_____
	E. Fails to cancel signal	5	5	5	5	5	_____	_____
	F. Can't control car when checking blind spot	5	5	5	5	5	_____	_____
9.	<u>SIGNALING FAILURES</u>							
	A. Leaving curb, pulling to curb, fails to signal	5	5	5	5	5	_____	_____
	B. Leaving curb, fails to check blind spot	5	5	5	5	5	_____	_____
	C. Leaving curb, fails to check mirrors	5	5	5	5	5	_____	_____
	D. Turning, fails to use turn signals	5	5	5	5	5	_____	_____
	E. Puts signal on too late or too early	5	5	5	5	5	_____	_____
10.	<u>SIGNAL VIOLATIONS</u>							
	A. Traffic signal (through on red/stop on green)	20	20	20	20	20	_____	_____
	B. Fails to anticipate light change	10	10	10	10	10	_____	_____
11.	<u>PARKING</u>							
	A. Hill parking	5	5	5	5	5	_____	_____
	B. 3 point turn	5	5	5	5	5	_____	_____
12.	<u>VEHICLE ON ROADWAY</u>							
	A. Can't control vehicle in lane	10	10	10	10	10	_____	_____
	B. Follows too close to other vehicles/tailgating	10	10	10	10	10	_____	_____
	C. Late response to vehicles	5	5	5	5	5	_____	_____
13.	<u>TURNS</u>							
	A. Too fast/too slow during turn	5	5	5	5	5	_____	_____
	B. Not a proper turn (fluid/out of lane)	5	5	5	5	5	_____	_____
	C. Strikes curb	10	10	10	10	10	_____	_____
	D. Improper use of right on red	5	5	5	5	5	_____	_____
14.	<u>ONE WAY STREETS</u>							
	A. Makes left from right	5	5	5	5	5	_____	_____
	B. Drives in wrong part of lane or straddles lane	5	5	5	5	5	_____	_____

PARENT SIGNATURE _____

- * If the teacher has to grab the steering wheel or use the brake to avoid an accident, the student driver automatically fails.
- * As per the State of Illinois, the behind-the-wheel phase is a pass or fail grade. This behind-the-wheel class does not count towards the GPA. If a student fails, it is because they are not ready to safely drive on the road alone.
- * If your child has passed the course, he/she may still need practice.

NOTES

NAME _____ DATE _____

PASS**FAIL**

(See notes on back)

FINAL EXAM

		<u>POINTS</u>					<u>TOTAL</u>	<u>COMMENTS</u>
1.	<u>STARTING THE VEHICLE</u>							
	A. Fastening seat belts, adjust mirror and seat	10	10	10	10	10	_____	_____
	B. Selects improper gear	10	10	10	10	10	_____	_____
2.	<u>BACKING</u>							
	A. Uses mirrors, strikes curb, out of lane	10	10	10	10	10	_____	_____
3.	<u>STEERING</u>							
	A. Places hands in incorrect position on wheel	5	5	5	5	5	_____	_____
	B. Uses one hand habitually	5	5	5	5	5	_____	_____
4.	<u>RAILROAD CROSSING</u>							
	A. Fails to look in all directions	5	5	5	5	5	_____	_____
	B. Fails to cover brake	5	5	5	5	5	_____	_____
5.	<u>SPEED CONTROL</u>							
	A. Too fast for conditions	10	10	10	10	10	_____	_____
	B. In excess of marked speed limits	10	10	10	10	10	_____	_____
	C. Too slow, doesn't keep up with traffic	5	5	5	5	5	_____	_____
6.	<u>STOPPING</u>							
	A. Not at a safe place	5	5	5	5	5	_____	_____
	B. Stops too abruptly	5	5	5	5	5	_____	_____
7.	<u>STOP STREETS</u>							
	A. Fails to come to a full stop	10	10	10	10	10	_____	_____
	B. Fails to yield right of way	10	10	10	10	10	_____	_____
	C. Fails to check cross traffic	10	10	10	10	10	_____	_____
8.	<u>LANE CHANGES</u>							
	A. Slows down to change lanes	5	5	5	5	5	_____	_____
	B. Fails to check blind spots	5	5	5	5	5	_____	_____
	C. Doesn't check mirror	5	5	5	5	5	_____	_____
	D. Doesn't use turn signals when moving from lane to lane	5	5	5	5	5	_____	_____
	E. Fails to cancel signal	5	5	5	5	5	_____	_____
	F. Can't control car when checking blind spot	5	5	5	5	5	_____	_____
9.	<u>SIGNALING FAILURES</u>							
	A. Leaving curb, pulling to curb, fails to signal	5	5	5	5	5	_____	_____
	B. Leaving curb, fails to check blind spot	5	5	5	5	5	_____	_____
	C. Leaving curb, fails to check mirrors	5	5	5	5	5	_____	_____
	D. Turning, fails to use turn signals	5	5	5	5	5	_____	_____
	E. Puts signal on too late or too early	5	5	5	5	5	_____	_____
10.	<u>SIGNAL VIOLATIONS</u>							
	A. Traffic signal (through on red/stop on green)	20	20	20	20	20	_____	_____
	B. Fails to anticipate light change	10	10	10	10	10	_____	_____
11.	<u>PARKING</u>							
	A. Hill parking	5	5	5	5	5	_____	_____
	B. 3 point turn	5	5	5	5	5	_____	_____
12.	<u>VEHICLE ON ROADWAY</u>							
	A. Can't control vehicle in lane	10	10	10	10	10	_____	_____
	B. Follows too close to other vehicles/tailgating	10	10	10	10	10	_____	_____
	C. Late response to vehicles	5	5	5	5	5	_____	_____
13.	<u>TURNS</u>							
	A. Too fast/too slow during turn	5	5	5	5	5	_____	_____
	B. Not a proper turn (fluid/out of lane)	5	5	5	5	5	_____	_____
	C. Strikes curb	10	10	10	10	10	_____	_____
	D. Improper use of right on red	5	5	5	5	5	_____	_____
14.	<u>ONE WAY STREETS</u>							
	A. Makes left from right	5	5	5	5	5	_____	_____
	B. Drives in wrong part of lane or straddles lane	5	5	5	5	5	_____	_____

PARENT SIGNATURE _____

- * If the teacher has to grab the steering wheel or use the brake to avoid an accident, the student driver automatically fails.
- * As per the State of Illinois, the behind-the-wheel phase is a pass or fail grade. This behind-the-wheel class does not count towards the GPA. If a student fails, it is because they are not ready to safely drive on the road alone.
- * If your child has passed the course, he/she may still need practice.

NOTES



FIELD SERVICES
2701 S. DIRKSEN PKWY.
SPRINGFIELD, IL 62723
217-782-7044
www.cyberdriveillinois.com

50 HOUR CERTIFICATION / UNDER AGE 18 APPLICANT

I hereby certify that _____
with Permit Number _____ Applicant's Name _____
has had a minimum of 50 hours of behind-the-wheel driving
practice (at least 10 or more of those hours at night) and is sufficiently prepared and able to safely operate a motor vehicle. The 50
hours are in addition to the required hours that my son/daughter has spent with a driver education instructor. I understand that all
50 hours must be spent with someone age 21 or older who has been licensed for at least one year. I also understand that, as a
parent/legal guardian, I am providing written consent permitting a minor under age 18 to apply for a driver's license, and that I may
withdraw the consent at any time prior to the applicant's 18th birthday. Under penalties of perjury, I swear or affirm that all the infor-
mation submitted by me regarding this certification is true and correct.

Signature and Driver's License Number of Parent, Legal Guardian or Other Responsible Adult

Date _____

The following chart may be used to record the 50 hours of driving practice. Please designate "D" (daytime hours) or "N" (nighttime hours) in the appropriate box below.

[illegible]

* Total time spent practicing must equal a MINIMUM OF 50 HOURS.