

Summary of Facility Needs

Facility assessments have identified key areas at both high schools where aging systems and outdated spaces no longer align with current standards for safety and learning.

Safety & Security



Several safety and security features at both campuses are dated. Improvements to access control systems, emergency alert capabilities, security film, and clearer internal and external wayfinding would provide a safer, more secure environment for students, staff, and visitors.

Life-Safety



State-mandated life-safety reviews have identified required updates to emergency exits, door hardware, stairway railings, and related components. Many of these elements are aging and no longer meet current standards.

ADA Accessibility



Both campuses have limitations that affect accessibility. The auditoriums, stadiums, and gymnasiums lack ADA-compliant seating, and many restrooms and other interior spaces require updates for full accessibility.

End-of-Life Infrastructure



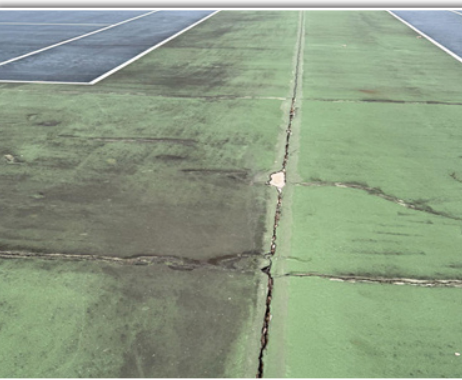
A significant number of core building systems, including electrical, plumbing, HVAC, and roofing, have reached or are nearing the end of their useful life. Parking lots and other site elements also show substantial wear. These conditions contribute to reduced efficiency, higher maintenance costs, and an increased risk of system failures.

Outdated CTE Spaces



Career and Technical Education (CTE) areas, including automotive technology and construction trades, rely on aging equipment and classroom layouts that no longer reflect current industry standards. The condition and design of these spaces limit opportunities for hands-on learning and make it more difficult for students to gain real-world, career-aligned skills.

Other Aging Assets



Performing arts and athletic spaces across both campuses have older equipment, outdated lighting, and worn finishes. Outdoor fields and courts also show significant wear. These assets support the academic, extracurricular, and athletic conditions that support the district's mission. They are also highly used and accessed by community organizations.



INSIDE

- Proposed Safety, Infrastructure, and CTE Space Improvements
- Possible November 2026 Referendum
- How Updates Could Be Made Without a Net Tax Rate Increase

DUPAGE HIGH SCHOOL DISTRICT 88
 Building Futures
 ADDISON TRAIL WILLOWBROOK
 DuPage High School District 88
 2 Friendship Plaza
 Addison, IL 60101

District 88's two high schools are 60 years old or older, with operating systems that are at or nearing the end of their useful life.



2026 BOND PROPOSAL



District 88 Proposes a Plan to Protect Aging Schools and Prepare Students for the Future, Without a Net Tax Rate Increase

District 88 is considering a bond referendum to address critical facility needs at Addison Trail and Willowbrook high schools, without a net tax rate increase.

Aging Facilities With Growing Needs

Addison Trail and Willowbrook high schools, both 60 years old or older, rely on core building systems that have reached or are nearing the end of their useful life. Even with up to \$1.5 million invested annually in maintenance, issues such as aging mechanical systems and required life-safety updates continue to grow.

A Possible November 2026 Referendum

District 88 is considering placing a bond referendum on the November 3, 2026 ballot to strengthen safety and security systems, update building infrastructure, improve ADA accessibility, and modernize CTE and instructional spaces.

Updates Possible Without a Net Tax Rate Increase

As bonds from the district's 2007 referendum are paid off after levy year 2026, District 88 could issue approximately \$118 million in new bonds without a net tax rate increase. New bond payments would replace expiring referendum debt, allowing needed improvements to be made while keeping the tax rate consistent.

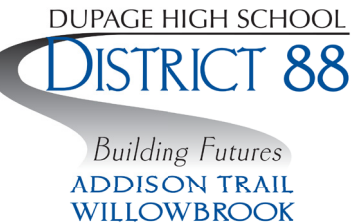
More details inside...

Community-Identified Priority Areas

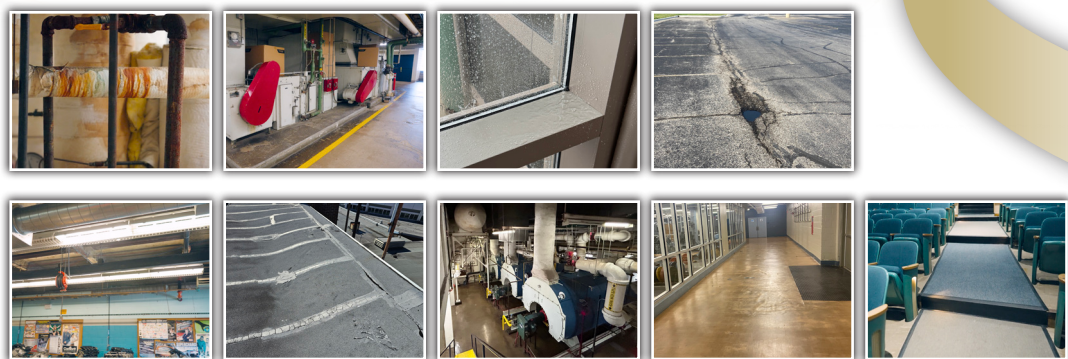
Facility assessments and community input have identified key needs in safety, infrastructure, accessibility, and instructional spaces. These include outdated Career and Technical Education (CTE) areas that no longer align with current industry standards or student workforce expectations.

“District 88's high schools are aging, and their needs continue to grow. By engaging our community and aligning potential improvements with expiring debt, we now have the opportunity to invest in our schools' future without a net tax rate increase.”

– Dr. Jean Barbanente
 Superintendent



2026 BOND PROPOSAL



DISTRICT 88 HIGH SCHOOLS: STRONG FROM THE OUTSIDE, AGING WITHIN.

~3,800
 current total
 enrollment

Buildings are
 60-67
 years old

Similar Improvements Proposed at Both Schools

Addison Trail and Willowbrook high schools share similar challenges related to aging facilities. The proposed plan would address those needs with the following high-priority improvements:

- Safety and security enhancements
- Code-required life-safety updates
- ADA accessibility improvements
- End-of-life infrastructure replacements
- Updated Career and Technical Education spaces
- Performing arts and athletics space updates

A History of Financial Stewardship

- District 88's last referendum was nearly 20 years ago, in 2007.
- The 2007 referendum projects were completed on time and within budget. Careful financial management allowed the district to complete more projects than originally planned, adding value for the taxpayer.
- The district's 'Aa1' Moody's bond rating indicates exceptional financial stability.
- District 88 maintains the Illinois State Board of Education "Recognition" designation, the state's highest financial rating.
- Past capital improvements demonstrate a track record of effective oversight, transparency, and responsible use of taxpayer funds, providing strong returns on community investments.










How Updates Are Possible Without a Net Tax Rate Increase

- **Debt Rolling Off:** Existing referendum debt will be paid off after levy year 2026, resulting in a decline in the district's debt service tax rate.
- **No Net Tax Rate Increase:** As this debt retires, approximately \$118 million of new bonds could be issued without a net tax rate increase.
- **Focused Project Scope:** The proposed scope of work is intentionally focused on the highest-priority facility needs.

“While our buildings appear strong on the outside, inside we have aging systems and Career and Technical Education (CTE) labs that no longer meet the needs of today's career-ready students. This proposal enables us to update these spaces responsibly and without a net tax rate increase.”

— Donna Craft Cain
President, Board of Education

Potential Outcomes

 Healthier, safer, and more secure schools	 Enhanced ADA accessibility	 Improved energy efficiency
 Extended useful life of existing facilities	 Industry-standard Career and Technical Education (CTE) spaces	 Better ability to attract and retain instructors
 Reduced costly and disruptive emergency repairs	 Stronger career pathways for students	 Maintained property values

Proposed Improvements at Each High School

	Addison Trail Built in 1966	Willowbrook Built in 1959
SAFETY & SECURITY		
Secure Entry/Access Control Updates	●	●
Secure Entry Film Upgrades	●	●
Expanded Emergency Notification Systems	●	●
Emergency Signage Improvements	●	●
LIFE-SAFETY		
Emergency Exit Improvements	●	●
Door Security Upgrades	●	●
Stairwell Guardrails/Handrails Updates	●	●
ADA ACCESSIBILITY		
ADA-Required Updates	●	●
ADA-Compliant Seating (Auditoriums, Grandstands, and Gymnasiums)	●	●
Restroom Improvements	●	●
INFRASTRUCTURE		
Mechanical Equipment Maintenance or Replacement	●	●
Roofing Maintenance, Refurbishment, or Replacement	●	●
Exterior Envelope Masonry Tuckpointing and Sealant Replacement	●	●
Exterior Concrete Replacement or Repairs	●	●
Exterior Window and Door Replacement	●	●
Exterior Light Fixture Replacement	●	●
Interior Light Fixture and Lighting Control Replacement	●	●
Carpet Flooring Replacement	●	●
Motorized Athletic Equipment Replacement (Gyms and Fieldhouses)	●	●
Parking Lot Repairs or Replacement	●	●
EDUCATIONAL SPACES		
Career and Technical Education (CTE) Classroom Updates	●	●
PERFORMING ARTS		
Audio/Visual Equipment/Amplification System Updates	●	●
Seating Updates	●	●
Stage and Other Lighting Upgrades or Replacement	●	●
ATHLETICS		
Scoreboard Replacement	●	●
Varsity Baseball Field Improvements	●	●
Varsity Softball Field Improvements	●	●
Underclass Baseball and Softball Fields Improvements	●	●
Tennis Court Resurfacing	●	●
Fitness Center Corridor Flooring Improvements	●	●

Upgrading CTE Spaces to Prepare Students for Tomorrow's Workforce

Many of the fastest-growing job opportunities are anticipated to be in health care, construction, skilled trades, and technical careers, which are the same areas students can explore through District 88's Career and Technical Education (CTE) classes. During the 2024-25 school year, District 88 students earned nearly 1,700 career certifications.



Conceptual images of modern Career and Technical Education (CTE) spaces.

Updated Labs for High-Demand Careers

Key Career and Technical Education (CTE) areas, including automotive technology and construction trades, would be updated with new equipment, improved building infrastructure, and safer, more efficient layouts that reflect current industry standards. These improvements would better support hands-on, project-based learning aligned with tomorrow's careers.


Real-World, Future-Ready Skills


Improved CTE environments would provide students with learning spaces that more closely reflect real workplace settings. Access to industry-aligned equipment and facilities would help students develop technical skills, explore career pathways, earn recognized certifications, and prepare for high-demand jobs.

Stronger Programs and a Local Workforce Pipeline

Updated CTE labs would allow the district to expand and strengthen program offerings, build stronger partnerships with local industry, and better respond to changing workforce needs. These improvements would support a stronger local talent pipeline, benefiting students, employers, and the broader community.

Learn More & Provide Feedback

 District 88 will be hosting community information meetings. Upcoming meeting dates and online registration are available at DuPage88.net/PublicInfoMeetings

 Participate in an opinion survey that will be mailed to you later this spring.

 Contact Information:
Dani Brink
dbrink@dupage88.net
(630) 530-3989



Scan the QR code or visit DuPage88.net/Proposal for more information.

1.1M sq. ft.
of facilities
maintained

Two campuses on
130 acres

~**20** years since last
major facility
upgrades

Annual maintenance
currently exceeds
\$1.5M

Waiting five years adds
~**\$22M**
in construction costs

Financing plan results in
\$0 net tax rate
increase

